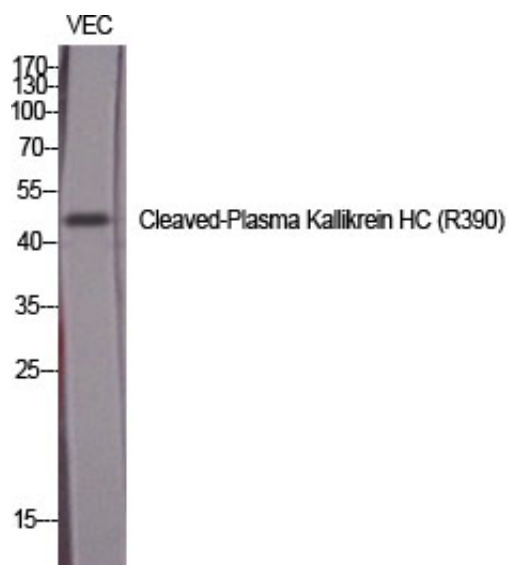


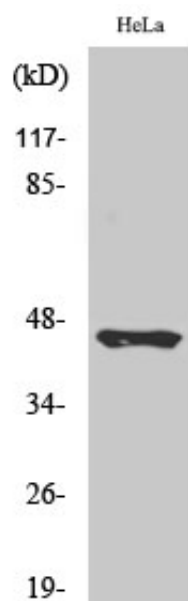
Cleaved-Plasma Kallikrein HC (R390) Polyclonal Antibody

Catalog_no :	AC0102
Applications :	WB,IHC-p,ELISA
Reactivity :	Human
Category :	抗原抗体
Size :	100µg/50µg/20µg
Gene_name :	KLKB1
Protein_name :	Plasma kallikrein
Humangene_id :	3818
Humanswissprot_no :	P03952
Immunogen :	The antiserum was produced against synthesized peptide derived from human KLKB1. AA range:341-390
Specificity :	Cleaved-Plasma Kallikrein HC (R390) Polyclonal Antibody detects endogenous levels of fragment of activated Plasma Kallikrein HC protein resulting from cleavage adjacent to R390.
Formulation :	Liquid in PBS containing 50% glycerol, 0.5% BSA and 0.02% sodium azide.
Source :	Rabbit
Dilution :	Western Blot: 1/500 - 1/2000. Immunohistochemistry: 1/100 - 1/300. ELISA: 1/10000. Not yet tested in other applications.
Purification :	The antibody was affinity-purified from rabbit antiserum by affinity-chromatography using epitope-specific immunogen.
Concentration :	1 mg/ml
Storage_stability :	-20°C/1 year
Msds :	MSDS_Antibody.pdf
Other_name :	KLKB1; KLK3; Plasma kallikrein; Fletcher factor; Kininogenin; Plasma prekallikrein
Molecular Weight :	45KD

Product Images



Western Blot analysis of various cells using Cleaved-Plasma Kallikrein HC (R390) Polyclonal Antibody diluted at 1 : 1000



Western Blot analysis of HeLa cells using Cleaved-Plasma Kallikrein HC (R390) Polyclonal Antibody diluted at 1 : 1000