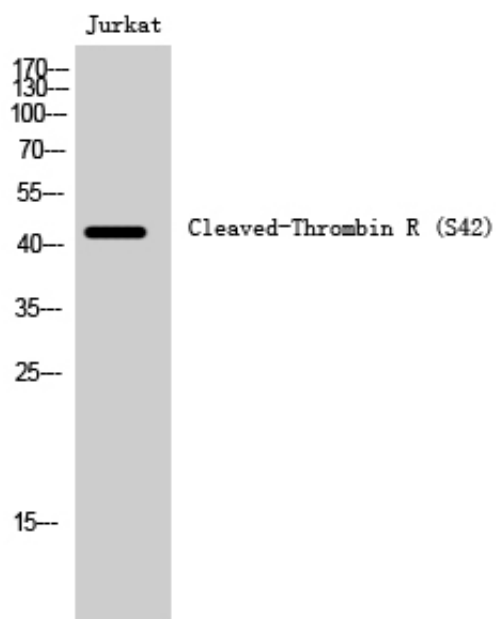


## Cleaved-Thrombin R (S42) Polyclonal Antibody

Catalog_no :	AC0104
Applications :	WB,ELISA
Reactivity :	Human
Category :	抗原抗体
Size :	100µg/50µg/20µg
Gene_name :	F2R
Protein_name :	Proteinase-activated receptor 1
Humangene_id :	<a href="#">2149</a>
Humanswissprot_no :	<a href="#">P25116</a>
Immunogen :	The antiserum was produced against synthesized peptide derived from human PAR1. AA range:23-72
Specificity :	Cleaved-Thrombin R (S42) Polyclonal Antibody detects endogenous levels of fragment of activated Thrombin R protein resulting from cleavage adjacent to S42.
Formulation :	Liquid in PBS containing 50% glycerol, 0.5% BSA and 0.02% sodium azide.
Source :	Rabbit
Dilution :	Western Blot: 1/500 - 1/2000. ELISA: 1/20000. Not yet tested in other applications.
Purification :	The antibody was affinity-purified from rabbit antiserum by affinity-chromatography using epitope-specific immunogen.
Concentration :	1 mg/ml
Storage_stability :	-20°C/1 year
Msds :	MSDS_Antibody.pdf
Other_name :	F2R; CF2R; PAR1; TR; Proteinase-activated receptor 1; PAR-1; Coagulation factor II receptor; Thrombin receptor
Molecular Weight :	46KD

## Product Images



Western Blot analysis of Jurkat cells using Cleaved-Thrombin R (S42) Polyclonal Antibody