

## Histone H3 (Di Methyl Lys10) Polyclonal Antibody

Catalog_no :	AH0008
Applications :	WB,IHC-p,ELISA
Reactivity :	Human,Mouse,Rat
Category :	抗原抗体
Size :	100µg/50µg/20µg
Gene_name :	HIST1H3A/HIST1H3/HIST1H3C/HIST1H3D/HIST1H3E/HIST1H3F/HIST1H3G/HIST1H3H/HIST1H3I/HIST1H3J/HIST2H3A/HIST2H3C/HIST2H3D/H3F3A/H3F3B/H3F3C
Protein_name :	Histone H3.1/Histone H3.2/Histone H3.3/Histone H3.3C
Humangene_id :	<a href="#">8350/8351/8352/8353/8354/8355/8356/8357/8358/8968/126961/333932/653604/3020/3021/440093</a>
Humanswissprot_no :	<a href="#">P68431/Q71DI3/P84243/Q6NXT2</a>
Mousegene_id :	
Ratgene_id :	
Ratswissprot_no :	
Immunogen :	Synthesized peptide derived from the N-terminal region of human Histone H3 around the di-methylation site of K10.
Specificity :	Di-Methyl-Histone H3 (K10) Polyclonal Antibody detects endogenous levels of Histone H3 protein only when di-methylated at K10.
Formulation :	Liquid in PBS containing 50% glycerol, 0.5% BSA and 0.02% sodium azide.
Source :	Rabbit
Dilution :	Western Blot: 1/500 - 1/2000. IHC-p: 1:100-300 ELISA: 1/10000. Not yet tested in other applications.
Purification :	The antibody was affinity-purified from rabbit antiserum by affinity-chromatography using epitope-specific immunogen.
Concentration :	1 mg/ml
Storage_stability :	-20°C/1 year
Msds :	<a href="#">MSDS_Antibody.pdf</a>



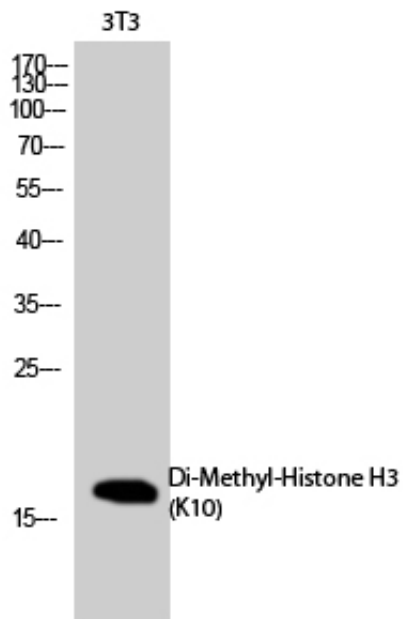
Other\_name : HIST1H3A; H3FA; HIST1H3B; H3FL; HIST1H3C; H3FC; HIST1H3D; H3FB; HIST1H3E; H3FD; HIST1H3F; H3FI; HIST1H3G; H3FH; HIST1H3H; H3FK; HIST1H3I; H3FF; HIST1H3J; H3FJ; Histone H3.1; Histone H3/a; Histone H3/b; Histone H3/c; Histone H3/d; Histone H3/f; Histone H3/h; Histone H3/i; Histone H3/j; Histone H3/k; Histone H3/l; HIST2H3A; HIST2H3C; H3F2; H3FM; HIST2H3D; Histone H3.2; Histone H3/m; Histone H3/o; H3F3A; H3.3A; H3F3; PP781; H3F3B; H3.3B; Histone H3.3; H3F3C; Histone H3.3C; Histone H3.5

---

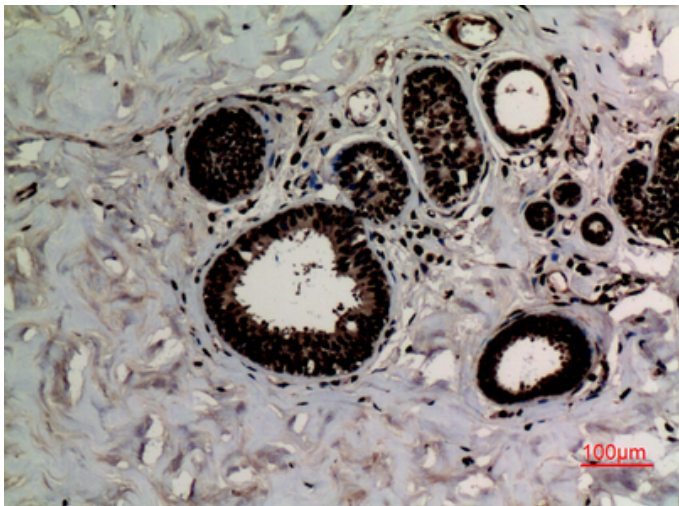
Molecular Weight : 17KD

---

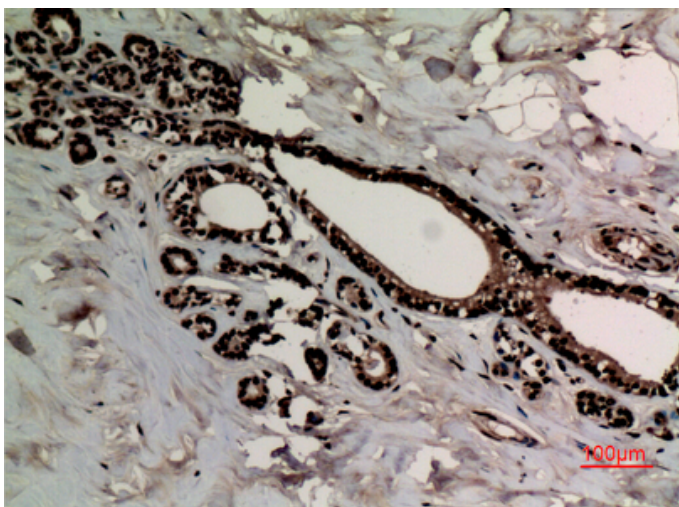
## Product Images



Western Blot analysis of NIH-3T3 cells using Di-Methyl-Histone H3 (K10) Polyclonal Antibody. Antibody was diluted at 1:1000. Secondary antibody was diluted at 1:20000



Immunohistochemical analysis of paraffin-embedded human breast cancer, antibody was diluted at 1:100



Immunohistochemical analysis of paraffin-embedded human breast cancer, antibody was diluted at 1:100