

## p53 (Mono Methyl Lys370) Polyclonal Antibody

Catalog_no :	AH0010
Applications :	WB,ELISA
Reactivity :	Human
Category :	抗原抗体
Size :	100µg/50µg/20µg
Gene_name :	TP53
Protein_name :	Cellular tumor antigen p53
Humangene_id :	<a href="#">7157</a>
Humanswissprot_no :	<a href="#">P04637</a>
Mousegene_id :	<a href="#">22059</a>
Mouseswissprot_no :	<a href="#">P02340</a>
Ratgene_id :	<a href="#">24842</a>
Ratswissprot_no :	<a href="#">P10361</a>
Immunogen :	Synthesized peptide derived from human p53 around the mono-methylation site of K370.
Specificity :	Mono-Methyl-p53 (K370) Polyclonal Antibody detects endogenous levels of p53 around the methylation site of K370 protein.
Formulation :	Liquid in PBS containing 50% glycerol, 0.5% BSA and 0.02% sodium azide.
Source :	Rabbit
Dilution :	Western Blot: 1/500 - 1/2000. ELISA: 1/10000. Not yet tested in other applications.
Purification :	The antibody was affinity-purified from rabbit antiserum by affinity-chromatography using epitope-specific immunogen.
Concentration :	1 mg/ml
Storage_stability :	-20°C/1 year
Msds :	MSDS_Antibody.pdf



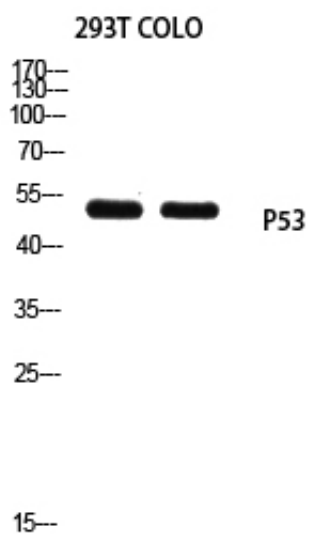
Other\_name : TP53; P53; Cellular tumor antigen p53; Antigen NY-CO-13; Phosphoprotein p53; Tumor suppressor p53

---

Molecular Weight : 53KD

---

## Product Images



Western blot analysis of 293T COLO using TP53 antibody. Antibody was diluted at 1:1000. Secondary antibody was diluted at 1:20000