

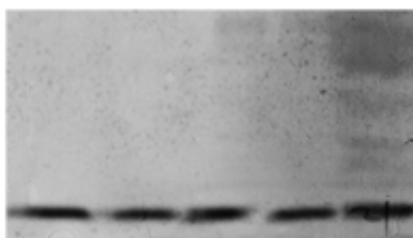


Mono-Methyl-Histone H4 (K21) Polyclonal Antibody

Catalog_no :	AH0011
Applications :	WB,ELISA
Reactivity :	Human,Rat,Mouse
Category :	抗原抗体
Size :	100µg/50µg/20µg
Gene_name :	Histone H3
Protein_name :	Histone H4
Humangene_id :	121504
Humanswissprot_no :	P62805
Immunogen :	Synthetic Mono-Methyl peptide from human protein at AA range: 21
Specificity :	The antibody detects endogenous Mono-Methyl-Histone H4 (K21)
Formulation :	Liquid in PBS containing 50% glycerol, 0.5% BSA and 0.02% sodium azide.
Source :	Rabbit
Dilution :	WB 1:500-2000, ELISA 1:10000-20000
Purification :	The antibody was affinity-purified from rabbit antiserum by affinity-chromatography using epitope-specific immunogen.
Concentration :	1 mg/ml
Storage_stability :	-20°C/1 year
Msds :	MSDS_Antibody.pdf
Other_name :	Histone H4
Molecular Weight :	11KD

Product Images

170— 1, 293T 2, Hela 3, VEC
130— 4, KB 5, mouse-kidney
100—
70—
55—
40—
35— 1 2 3 4 5
25—
15—



Western blot analysis of 3T3 mouse-kidney KB K562 Hela 293T lysate, antibody was diluted at 1000. Secondary antibody was diluted at 1:20000