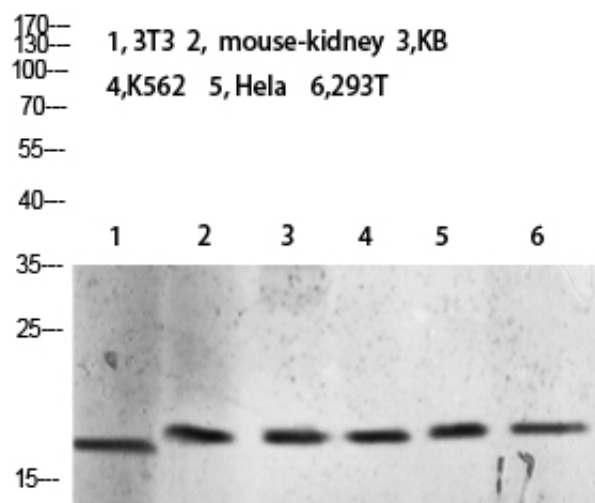




## Tri-Methyl-Histone H3 (K10) Polyclonal Antibody

Catalog_no :	AH0012
Applications :	WB,ELISA
Reactivity :	Human,Rat,Mouse
Category :	抗原抗体
Size :	100µg/50µg/20µg
Gene_name :	Histone H3
Protein_name :	Histone H3
Humangene_id :	<a href="#">8350</a>
Humanswissprot_no :	<a href="#">P68431/Q71DI3/P84243/Q6NXT2</a>
Immunogen :	Synthetic Tri-Methyl peptide from human protein at AA range: 10
Specificity :	The antibody detects endogenous Tri-Methyl-Histone H3 (K10)
Formulation :	Liquid in PBS containing 50% glycerol, 0.5% BSA and 0.02% sodium azide.
Source :	Rabbit
Dilution :	WB 1:500-2000, ELISA 1:10000-20000
Purification :	The antibody was affinity-purified from rabbit antiserum by affinity-chromatography using epitope-specific immunogen.
Concentration :	1 mg/ml
Storage_stability :	-20°C/1 year
Msds :	<a href="#">MSDS_Antibody.pdf</a>
Molecular Weight :	15KD

## Product Images



Western blot analysis of 293T lysate, antibody was diluted at 2000. Secondary antibody was diluted at 1:20000