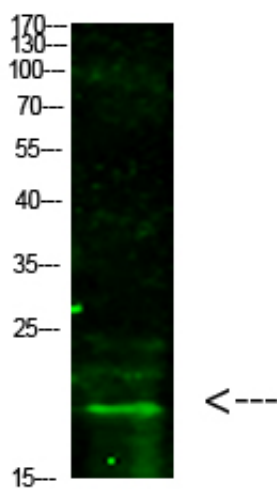




## Histone H3 (Tri-Methyl-K5) Polyclonal Antibody

Catalog_no :	AH0013
Applications :	WB,ELISA
Reactivity :	Human:K5Mouse:K5Rat:K5
Category :	抗原抗体
Size :	100µg/50µg/20µg
Gene_name :	HIST1H3A/HIST1H3B/HIST1H3C/HIST1H3D/HIST1H3E/HIST1H3F/HIST1H3G/HIST1H3H/HIST1H3I/HIST1H3J/HIST2H3A/HIST2H3C/HIST2H3D/H3F3A/H3F3B
Protein_name :	Histone H3
Humangene_id :	<a href="#">8350</a>
Humanswissprot_no :	<a href="#">P68431/Q71DI3/P84243/Q6NXT2</a>
Immunogen :	Synthesized Tri-Methyl peptide derived from human Histone H3. at AA range: K5
Specificity :	This antibody detects endogenous levels of Histone H3 (Tri-Methyl-K5), It doesn't react with total or Di-Methyl or Mono-Methyl protein.
Formulation :	Liquid in PBS containing 50% glycerol, 0.5% BSA and 0.02% sodium azide.
Source :	Rabbit
Dilution :	Western Blot: 1/500 - 1/2000. ELISA: 1/20000. Not yet tested in other applications.
Purification :	The antibody was affinity-purified from rabbit antiserum by affinity-chromatography using epitope-specific immunogen.
Concentration :	1 mg/ml
Storage_stability :	-20°C/1 year
Msds :	<a href="#">MSDS_Antibody.pdf</a>
Other_name :	Histone H3

## Product Images



Western Blot analysis of hela cells using primary antibody diluted at 1:1000(4°C overnight). Secondary antibody : Goat Anti-rabbit IgG IRDye 800( diluted at 1:5000, 25°C, 1 hour)