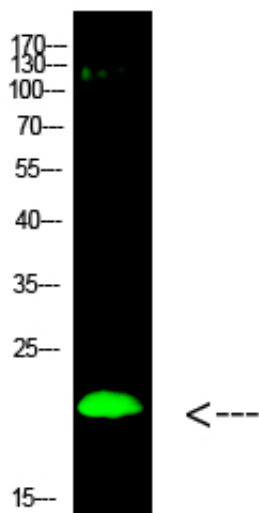


Histone H3 (Di-Methyl-K80) Polyclonal Antibody

Catalog_no :	AH0014
Applications :	WB,ELISA
Reactivity :	Human:K80Mouse:K80Rat:K80
Category :	抗原抗体
Size :	100µg/50µg/20µg
Gene_name :	HIST1H3A/HIST1H3B/HIST1H3C/HIST1H3D/HIST1H3E/HIST1H3F/HIST1H3G/HIST1H3H/HIST1H3I/HIST1H3J/HIST2H3A/HIST2H3C/HIST2H3D/H3F3A/H3F3B
Protein_name :	Histone H3
Humangene_id :	8350
Humanswissprot_no :	P68431/Q71DI3/P84243/Q6NXT2
Immunogen :	Synthesized Tri-Methyl peptide derived from human Histone H3. at AA range: K80
Specificity :	This antibody detects endogenous levels of Histone H3 (Di-Methyl-K80)), It doesn't react with total or Tri-Methyl or Mono-Methyl protein.
Formulation :	Liquid in PBS containing 50% glycerol, 0.5% BSA and 0.02% sodium azide.
Source :	Rabbit
Dilution :	wb dilution 1:1000
Purification :	The antibody was affinity-purified from rabbit antiserum by affinity-chromatography using epitope-specific immunogen.
Concentration :	1 mg/ml
Storage_stability :	-20°C/1 year
Msds :	MSDS_Antibody.pdf
Other_name :	Histone H3

Product Images



Western Blot analysis of hela cells using primary antibody diluted at 1:1000(4°C overnight). Secondary antibody : Goat Anti-rabbit IgG IRDye 800(diluted at 1:5000, 25°C, 1 hour)