

## Histone H3 (Acetyl Lys18) Polyclonal Antibody

Catalog_no :	AK0008
Applications :	WB,IHC-p,IF,ELISA
Reactivity :	Human,Mouse,Rat
Category :	抗原抗体
Size :	100µg/50µg/20µg
Gene_name :	HIST1H3A/HIST1H3B/HIST1H3C/HIST1H3D/HIST1H3E/HIST1H3F/HIST1H3G/HIST1H3H/HIST1H3I/HIST1H3J/HIST2H3A/HIST2H3C/HIST2H3D/H3F3A/H3F3B
Protein_name :	Histone H3.1/Histone H3.2/Histone H3.3
Humangene_id :	<a href="#">8350/8351/8352/8353/8354/8355/8356/8357/8358/8968/126961/333932/653604/3020/3021</a>
Humanswissprot_no :	<a href="#">P68431/Q71DI3/P84243</a>
Mousegene_id :	<a href="#">319152/15077/15078</a>
Ratgene_id :	<a href="#">291159/100361558</a>
Ratswissprot_no :	<a href="#">Q6LED0/P84245</a>
Immunogen :	The antiserum was produced against synthesized peptide derived from human Histone H3 around the acetylated site of Lys18. AA range:1-50
Specificity :	Acetyl-Histone H3 (K18) Polyclonal Antibody detects endogenous levels of Histone H3 protein only when acetylated at K18.
Formulation :	Liquid in PBS containing 50% glycerol, 0.5% BSA and 0.02% sodium azide.
Source :	Rabbit
Dilution :	Western Blot: 1/500 - 1/2000. Immunohistochemistry: 1/100 - 1/300. Immunofluorescence: 1/200 - 1/1000. ELISA: 1/5000. Not yet tested in other applications.
Purification :	The antibody was affinity-purified from rabbit antiserum by affinity-chromatography using epitope-specific immunogen.
Concentration :	1 mg/ml
Storage_stability :	-20°C/1 year
Msds :	MSDS_Antibody.pdf



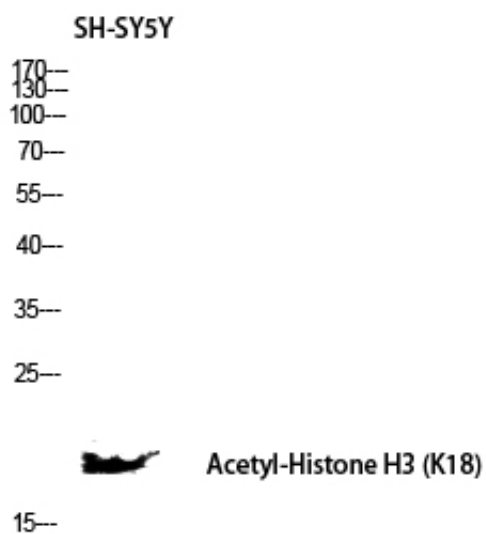
Other\_name : HIST1H3A; H3FA; HIST1H3B; H3FL; HIST1H3C; H3FC; HIST1H3D; H3FB; HIST1H3E; H3FD;  
HIST1H3F; H3FI; HIST1H3G; H3FH; HIST1H3H; H3FK; HIST1H3I; H3FF; HIST1H3J; H3FJ;  
Histone H3.1; Histone H3/a; Histone H3/b; Histone H3/c; Histone H3/d; Histone H3

---

Molecular Weight : 17KD

---

## Product Images



Western blot analysis of SH-SY5Y lysis using Acetyl-Histone H3 (K18) antibody. Antibody was diluted at 1:1000. Secondary antibody was diluted at 1:20000