



## Histone H3 (Acetyl Lys23) Polyclonal Antibody

Catalog_no :	<u>AK0009</u>
Applications :	<u>WB,IF,ELISA</u>
Reactivity :	<u>Human,Mouse,Rat</u>
Category :	<u>抗原抗体</u>
Size :	<u>100µg/50µg/20µg</u>
Gene_name :	<u>HIST1H3A/HIST1H3B/HIST1H3C/HIST1H3D/HIST1H3E/HIST1H3F/HIST1H3G/HIST1H3H/HIST1H3I/HIST1H3J/HIST2H3A/HIST2H3C/HIST2H3D/H3F3A/H3F3B</u>
Protein_name :	<u>Histone H3.1/Histone H3.2/Histone H3.3</u>
Humangene_id :	<u><a href="#">8350/8351/8352/8353/8354/8355/8356/8357/8358/8968/126961/333932/653604/3020/3021</a></u>
Humanswissprot_no :	<u><a href="#">P68431/Q71DI3/P84243</a></u>
Mousegene_id :	<u><a href="#">319152/15077/15078</a></u>
Ratgene_id :	<u><a href="#">291159/100361558</a></u>
Ratswissprot_no :	<u><a href="#">Q6LED0/P84245</a></u>
Immunogen :	<u>The antiserum was produced against synthesized peptide derived from human Histone H3 around the acetylated site of Lys23. AA range:-9-40</u>
Specificity :	<u>Acetyl-Histone H3 (K23) Polyclonal Antibody detects endogenous levels of Histone H3 protein only when acetylated at K23.</u>
Formulation :	<u>Liquid in PBS containing 50% glycerol, 0.5% BSA and 0.02% sodium azide.</u>
Source :	<u>Rabbit</u>
Dilution :	<u>Western Blot: 1/500 - 1/2000. Immunofluorescence: 1/200 - 1/1000. ELISA: 1/5000. Not yet tested in other applications.</u>
Purification :	<u>The antibody was affinity-purified from rabbit antiserum by affinity-chromatography using epitope-specific immunogen.</u>
Concentration :	<u>1 mg/ml</u>
Storage_stability :	<u>-20°C/1 year</u>
Msds :	<u><a href="#">MSDS_Antibody.pdf</a></u>



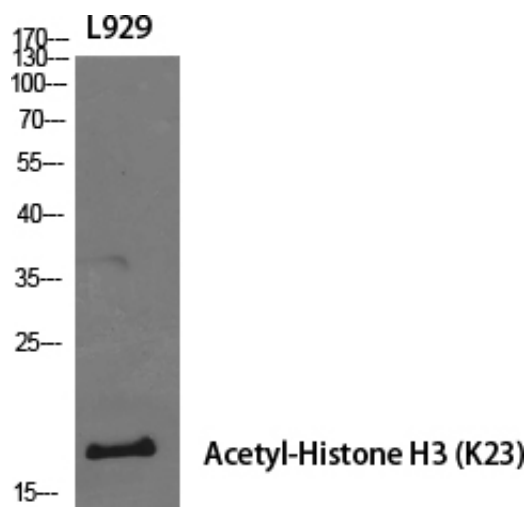
Other\_name : HIST1H3A; H3FA; HIST1H3B; H3FL; HIST1H3C; H3FC; HIST1H3D; H3FB; HIST1H3E; H3FD;  
HIST1H3F; H3FI; HIST1H3G; H3FH; HIST1H3H; H3FK; HIST1H3I; H3FF; HIST1H3J; H3FJ;  
Histone H3.1; Histone H3/a; Histone H3/b; Histone H3/c; Histone H3/d; Histone H3

---

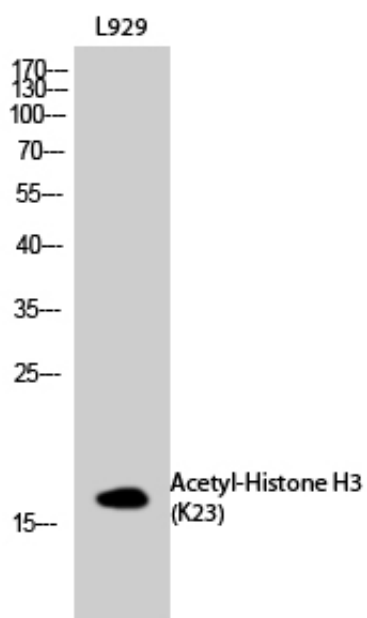
Molecular Weight : 17KD

---

## Product Images



Western Blot analysis of various cells using Acetyl-Histone H3 (K23) Polyclonal Antibody diluted at 1 : 1000. Secondary antibody was diluted at 1:20000



Western Blot analysis of L929 cells using Acetyl-Histone H3 (K23) Polyclonal Antibody diluted at 1 : 1000. Secondary antibody was diluted at 1:20000