



Histone H4 (Acetyl Lys8) Polyclonal Antibody

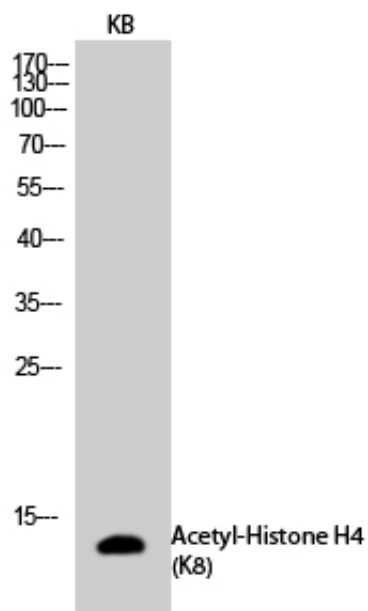
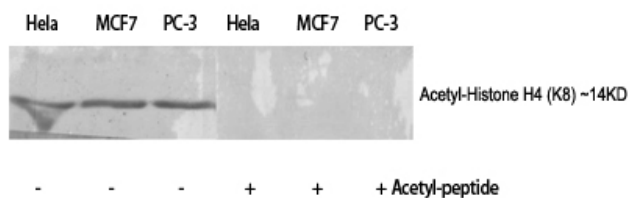
Catalog_no :	<u>AK0012</u>
Applications :	<u>WB,IHC-p,IF,ELISA</u>
Reactivity :	<u>Human,Mouse,Rat,Monkey</u>
Category :	<u>抗原抗体</u>
Size :	<u>100µg/50µg/20µg</u>
Gene_name :	<u>HIST1H4A/HIST1H4B/HIST1H4C/HIST1H4D/HIST1H4E/HIST1H4F/HIST1H4H/HIST1H4I/HIST1H4J/HIST1H4K/HIST1H4L/HIST2H4A/HIST2H4B/HIST4H4</u>
Protein_name :	<u>Histone H4</u>
Humangene_id :	<u>121504/554313/8294/8359/8360/8361/8362/8363/8364/8365/8366/8367/8368/8370</u>
Humanswissprot_no :	<u>P62805</u>
Mousegene_id :	<u>1.00041e+008</u>
Mouseswissprot_no :	<u>P62806</u>
Ratgene_id :	<u>1.00361e+008</u>
Ratswissprot_no :	<u>P62804</u>
Immunogen :	<u>The antiserum was produced against synthesized peptide derived from human Histone H4 around the acetylated site of Lys8. AA range:1-50</u>
Specificity :	<u>Acetyl-Histone H4 (K8) Polyclonal Antibody detects endogenous levels of Histone H4 protein only when acetylated at K8.</u>
Formulation :	<u>Liquid in PBS containing 50% glycerol, 0.5% BSA and 0.02% sodium azide.</u>
Source :	<u>Rabbit</u>
Dilution :	<u>Western Blot: 1/500 - 1/2000. Immunohistochemistry: 1/100 - 1/300. Immunofluorescence: 1/200 - 1/1000. ELISA: 1/5000. Not yet tested in other applications.</u>
Purification :	<u>The antibody was affinity-purified from rabbit antiserum by affinity-chromatography using epitope-specific immunogen.</u>
Concentration :	<u>1 mg/ml</u>
Storage_stability	<u>-20°C/1 year</u>



:	
MsdS :	MSDS_Antibody.pdf
Other_name :	HIST1H4A; H4/A; H4FA; HIST1H4B; H4/I; H4FI; HIST1H4C; H4/G; H4FG; HIST1H4D; H4/B; H4FB; HIST1H4E; H4/J; H4FJ; HIST1H4F; H4/C; H4FC; HIST1H4H; H4/H; H4FH; HIST1H4I; H4/M; H4FM; HIST1H4J; H4/E; H4FE; HIST1H4K; H4/D; H4FD; HIST1H4L; H4/K; H4FK
Molecular Weight :	11KD

Product Images

Western Blot analysis of various cells using Acetyl-Histone H4 (K8) Polyclonal Antibody diluted at 1 : 500. Secondary antibody was diluted at 1:20000



Western Blot analysis of KB cells using Acetyl-Histone H4 (K8) Polyclonal Antibody diluted at 1 : 500. Secondary antibody was diluted at 1:20000