

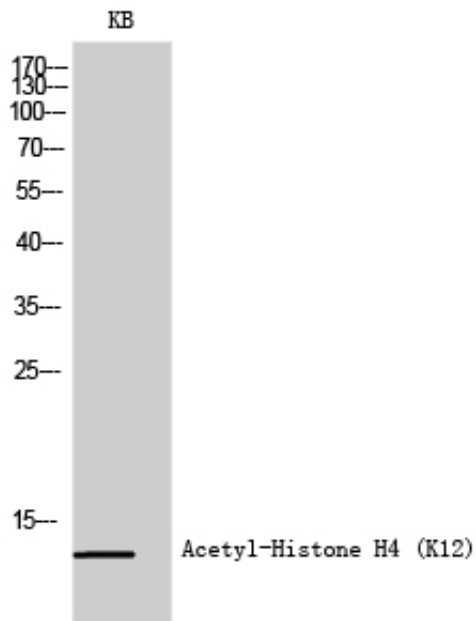
## Histone H4 (Acetyl Lys12) Polyclonal Antibody

Catalog_no :	<u>AK0013</u>
Applications :	<u>WB,IHC-p,IF,ELISA</u>
Reactivity :	<u>Human,Mouse,Rat,Monkey</u>
Category :	<u>抗原抗体</u>
Size :	<u>100µg/50µg/20µg</u>
Gene_name :	<u>HIST1H4A/HIST1H4B/HIST1H4C/HIST1H4D/HIST1H4E/HIST1H4F/HIST1H4H/HIST1H4I/HIST1H4J/HIST1H4K/HIST1H4L/HIST2H4A/HIST2H4B/HIST4H4</u>
Protein_name :	<u>Histone H4</u>
Humangene_id :	<u><a href="#">121504/554313/8294/8359/8360/8361/8362/8363/8364/8365/8366/8367/8368/8370</a></u>
Humanswissprot_no :	<u><a href="#">P62805</a></u>
Mousegene_id :	<u><a href="#">1.00041e+008</a></u>
Mouseswissprot_no :	<u><a href="#">P62806</a></u>
Ratgene_id :	<u><a href="#">1.00361e+008</a></u>
Ratswissprot_no :	<u><a href="#">P62804</a></u>
Immunogen :	<u>The antiserum was produced against synthesized peptide derived from human Histone H4 around the acetylated site of Lys12. AA range:10-59</u>
Specificity :	<u>Acetyl-Histone H4 (K12) Polyclonal Antibody detects endogenous levels of Histone H4 protein only when acetylated at K12.</u>
Formulation :	<u>Liquid in PBS containing 50% glycerol, 0.5% BSA and 0.02% sodium azide.</u>
Source :	<u>Rabbit</u>
Dilution :	<u>Western Blot: 1/500 - 1/2000. Immunohistochemistry: 1/100 - 1/300. Immunofluorescence: 1/200 - 1/1000. ELISA: 1/10000. Not yet tested in other applications.</u>
Purification :	<u>The antibody was affinity-purified from rabbit antiserum by affinity-chromatography using epitope-specific immunogen.</u>
Concentration :	<u>1 mg/ml</u>
Storage_stability	<u>-20°C/1 year</u>

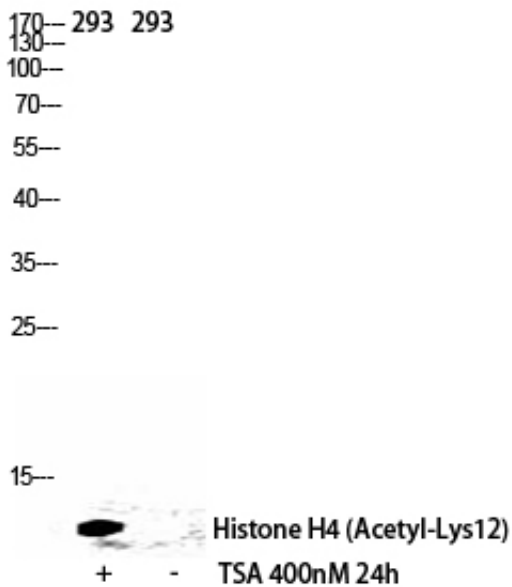


:	
MsdS :	<a href="#">MSDS_Antibody.pdf</a>
Other_name :	<a href="#">HIST1H4A; H4/A; H4FA; HIST1H4B; H4/I; H4FI; HIST1H4C; H4/G; H4FG; HIST1H4D; H4/B; H4FB; HIST1H4E; H4/J; H4FJ; HIST1H4F; H4/C; H4FC; HIST1H4H; H4/H; H4FH; HIST1H4I; H4/M; H4FM; HIST1H4J; H4/E; H4FE; HIST1H4K; H4/D; H4FD; HIST1H4L; H4/K; H4FK</a>
Molecular Weight :	<a href="#">11KD</a>

## Product Images



Western Blot analysis of KB cells using Acetyl-Histone H4 (K12) Polyclonal Antibody diluted at 1 : 500. Secondary antibody was diluted at 1:20000



Western Blot analysis of 293 cells using Acetyl-Histone H4 (K12) Polyclonal Antibody diluted at 1 : 500. Secondary antibody was diluted at 1:20000

Western blot analysis of Mouse-kidney HELA lysis using Acetyl-Histone H4 (K12) antibody. Antibody was diluted at 1:500. Secondary antibody was diluted at 1:20000

Mouse-kidney HELA

170—  
130—  
100—  
70—  
55—  
40—  
35—  
25—

15—



Acetyl-  
Histone H4 (K12)