

CBP (Acetyl Lys1535) Polyclonal Antibody

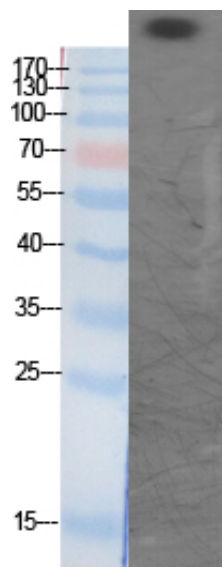
Catalog_no :	AK0019
Applications :	WB,IHC-p,ELISA
Reactivity :	Human,Mouse,Rat
Category :	抗原抗体
Size :	100µg/50µg/20µg
Gene_name :	CREBBP
Protein_name :	CREB-binding protein
Humangene_id :	1387
Humanswissprot_no :	Q92793
Mouseswissprot_no :	P45481
Ratswissprot_no :	Q6JHU9
Immunogen :	The antiserum was produced against synthesized peptide derived from human CBP around the acetylated site of Lys1535. AA range:1501-1550
Specificity :	Acetyl-CBP (K1535) Polyclonal Antibody detects endogenous levels of CBP protein only when acetylated at K1535.
Formulation :	Liquid in PBS containing 50% glycerol, 0.5% BSA and 0.02% sodium azide.
Source :	Rabbit
Dilution :	Western Blot: 1/500 - 1/2000. Immunohistochemistry: 1/100 - 1/300. ELISA: 1/20000. Not yet tested in other applications.
Purification :	The antibody was affinity-purified from rabbit antiserum by affinity-chromatography using epitope-specific immunogen.
Concentration :	1 mg/ml
Storage_stability :	-20°C/1 year
Msds :	MSDS_Antibody.pdf
Other_name :	CREBBP; CBP; CREB-binding protein



Molecular
Weight :

265KD

Product Images



Western Blot analysis of various cells using Acetyl-CBP (K1535) Polyclonal Antibody diluted at 1 : 1000. Secondary antibody was diluted at 1:20000