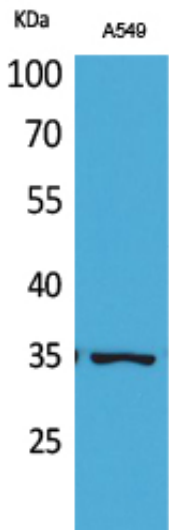


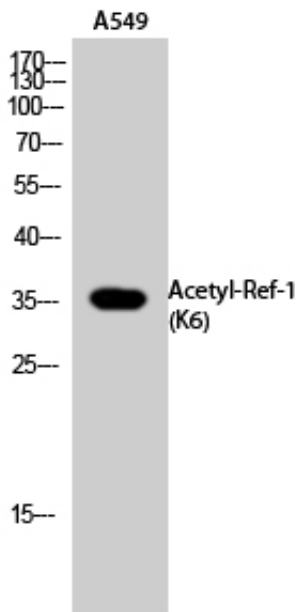
## Ref-1 (Acetyl Lys6) Polyclonal Antibody

Catalog_no :	AK0022
Applications :	WB,IHC-p,ELISA
Reactivity :	Human
Category :	抗原抗体
Size :	100µg/50µg/20µg
Gene_name :	APEX1
Protein_name :	DNA-(apurinic or apyrimidinic site) lyase
Humangene_id :	<a href="#">328</a>
Humanswissprot_no :	<a href="#">P27695</a>
Immunogen :	The antiserum was produced against synthesized Acetyl-peptide derived from human APE1 around the Acetylation site of Lys6. AA range:1-50
Specificity :	Acetyl-Ref-1 (K6) Polyclonal Antibody detects endogenous levels of Ref-1 protein only when acetylated at K6.
Formulation :	Liquid in PBS containing 50% glycerol, 0.5% BSA and 0.02% sodium azide.
Source :	Rabbit
Dilution :	Western Blot: 1/500 - 1/2000. IHC-p: 1:100-300 ELISA: 1/20000. Not yet tested in other applications.
Purification :	The antibody was affinity-purified from rabbit antiserum by affinity-chromatography using epitope-specific immunogen.
Concentration :	1 mg/ml
Storage_stability :	-20°C/1 year
Msds :	MSDS_Antibody.pdf
Other_name :	APEX1; APE; APE1; APEX; APX; HAP1; REF1; DNA-(apurinic or apyrimidinic site) lyase; APEX nuclease; APEN; Apurinic-apyrimidinic endonuclease 1; AP endonuclease 1; APE-1; REF-1; Redox factor-1
Molecular Weight :	35KD

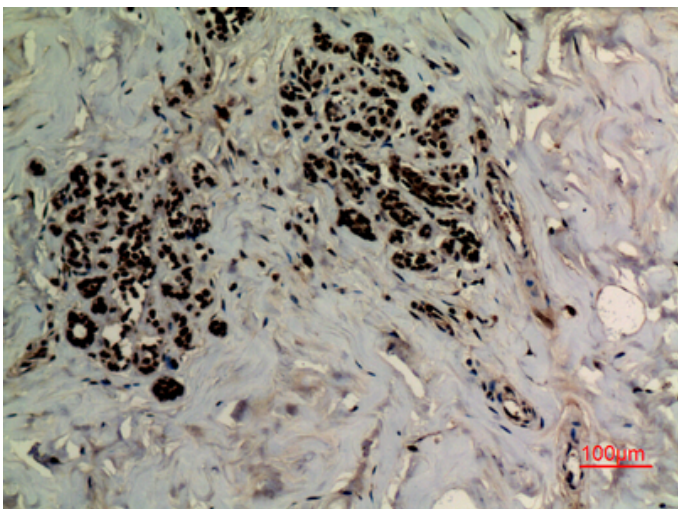
## Product Images



Western Blot analysis of A549 cells using Acetyl-Ref-1 (K6) Polyclonal Antibody.. Secondary antibody was diluted at 1:20000

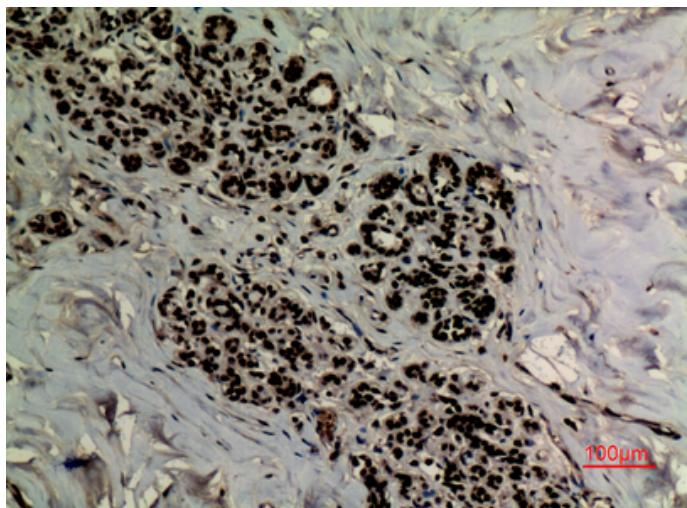


Western Blot analysis of A549 cells using Acetyl-Ref-1 (K6) Polyclonal Antibody. Secondary antibody was diluted at 1:20000



Immunohistochemical analysis of paraffin-embedded human-breast, antibody was diluted at 1:100

Immunohistochemical analysis of paraffin-embedded



human-breast, antibody was diluted at 1:100