

ATF-5 (Acetyl Lys29) Polyclonal Antibody

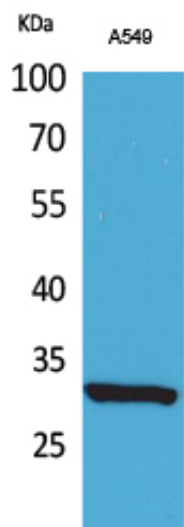
| | |
|---------------------|---|
| Catalog_no : | AK0024 |
| Applications : | WB,ELISA |
| Reactivity : | Human,Mouse,Rat |
| Category : | 抗原抗体 |
| Size : | 100µg/50µg/20µg |
| Gene_name : | ATF5 |
| Protein_name : | Cyclic AMP-dependent transcription factor ATF-5 |
| Humangene_id : | 22809 |
| Humanswissprot_no : | Q9Y2D1 |
| Mousegene_id : | 107503 |
| Mouseswissprot_no : | O70191 |
| Ratgene_id : | 282840 |
| Ratswissprot_no : | Q6P788 |
| Immunogen : | The antiserum was produced against synthesized Acetyl-peptide derived from human ATF5 around the Acetylation site of Lys29. AA range:1-50 |
| Specificity : | Acetyl-ATF-5 (K29) Polyclonal Antibody detects endogenous levels of ATF-5 protein only when acetylated at K29. |
| Formulation : | Liquid in PBS containing 50% glycerol, 0.5% BSA and 0.02% sodium azide. |
| Source : | Rabbit |
| Dilution : | Western Blot: 1/500 - 1/2000. ELISA: 1/20000. Not yet tested in other applications. |
| Purification : | The antibody was affinity-purified from rabbit antiserum by affinity-chromatography using epitope-specific immunogen. |
| Concentration : | 1 mg/ml |
| Storage_stability : | -20°C/1 year |
| Msds : | MSDS_Antibody.pdf |



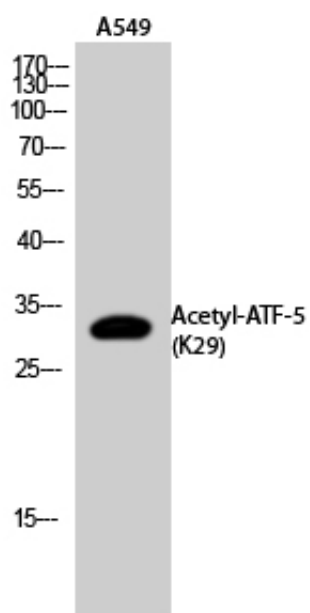
Other_name : ATF5; ATFX; Cyclic AMP-dependent transcription factor ATF-5; cAMP-dependent transcription factor ATF-5; Activating transcription factor 5; Transcription factor ATFx

Molecular Weight : 30KD

Product Images



Western Blot analysis of A549 cells using Acetyl-ATF-5 (K29) Polyclonal Antibody.. Secondary antibody was diluted at 1:20000



Western Blot analysis of A549 cells using Acetyl-ATF-5 (K29) Polyclonal Antibody. Secondary antibody was diluted at 1:20000