



E2F-4 (Acetyl Lys96) Polyclonal Antibody

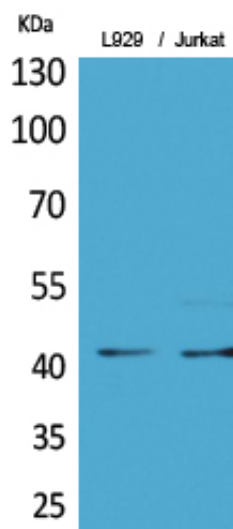
Catalog_no :	AK0025
Applications :	WB,ELISA
Reactivity :	Human,Mouse,Rat
Category :	抗原抗体
Size :	100µg/50µg/20µg
Gene_name :	E2F4
Protein_name :	Transcription factor E2F4
Humangene_id :	1874
Humanswissprot_no :	Q16254
Mousegene_id :	104394
Mouseswissprot_no :	Q8R0K9
Immunogen :	The antiserum was produced against synthesized Acetyl-peptide derived from human E2F4 around the Acetylation site of Lys96. AA range:61-110
Specificity :	Acetyl-E2F-4 (K96) Polyclonal Antibody detects endogenous levels of E2F-4 protein only when acetylated at K96.
Formulation :	Liquid in PBS containing 50% glycerol, 0.5% BSA and 0.02% sodium azide.
Source :	Rabbit
Dilution :	Western Blot: 1/500 - 1/2000. ELISA: 1/20000. Not yet tested in other applications.
Purification :	The antibody was affinity-purified from rabbit antiserum by affinity-chromatography using epitope-specific immunogen.
Concentration :	1 mg/ml
Storage_stability :	-20°C/1 year
Msds :	MSDS_Antibody.pdf
Other_name :	E2F4; Transcription factor E2F4; E2F-4
Molecular Weight :	43KD



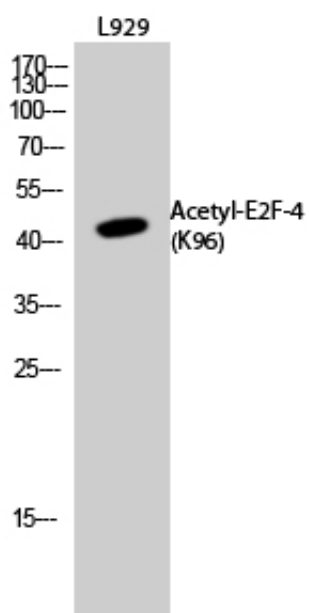
专注二抗产品

Biodragon旗下品牌

Product Images



Western Blot analysis of L929, Jurkat cells using Acetyl-E2F-4 (K96) Polyclonal Antibody.. Secondary antibody was diluted at 1:20000



Western Blot analysis of L929 cells using Acetyl-E2F-4 (K96) Polyclonal Antibody. Secondary antibody was diluted at 1:20000