

EF-1 α 1/2 (Acetyl Lys41) Polyclonal Antibody

Catalog_no :	AK0028
Applications :	WB,ELISA
Reactivity :	Human,Mouse,Rat
Category :	抗原抗体
Size :	100 μ g/50 μ g/20 μ g
Gene_name :	EEF1A1/EEF1A2/EEF1A1P5
Protein_name :	Elongation factor 1-alpha 1/Elongation factor 1-alpha 2/Putative elongation factor 1-alpha-like 3
Humangene_id :	1915
Humanswissprot_no :	P68104
Mousegene_id :	13627
Mouseswissprot_no :	P10126
Ratgene_id :	171361
Ratswissprot_no :	P62630
Immunogen :	The antiserum was produced against synthesized Acetyl-peptide derived from human EEF1A around the Acetylation site of Lys41. AA range:1-50
Specificity :	Acetyl-EF-1 α 1/2 (K41) Polyclonal Antibody detects endogenous levels of EF-1 α 1/2 protein only when acetylated at K41.
Formulation :	Liquid in PBS containing 50% glycerol, 0.5% BSA and 0.02% sodium azide.
Source :	Rabbit
Dilution :	Western Blot: 1/500 - 1/2000. ELISA: 1/20000. Not yet tested in other applications.
Purification :	The antibody was affinity-purified from rabbit antiserum by affinity-chromatography using epitope-specific immunogen.
Concentration :	1 mg/ml
Storage_stability :	-20°C/1 year

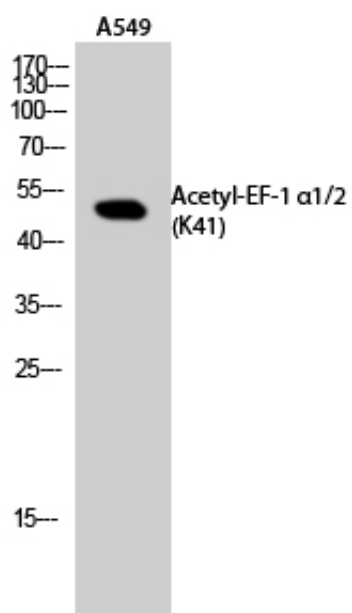


MsdS :	MSDS_Antibody.pdf
Other_name :	EEF1A1; EEF1A; EF1A; LENG7; Elongation factor 1-alpha 1; EF-1-alpha-1; Elongation factor Tu; EF-Tu; Eukaryotic elongation factor 1 A-1; eEF1A-1; Leukocyte receptor cluster member 7; EEF1A2; EEF1AL; STN; Elongation factor 1-alpha 2; EF-1-alpha-2;Eukaryotic elongation factor 1 A-2; eEF1A-2; Statin-S1; EEF1A1P5; EEF1AL3; Putative elongation factor 1-alpha-like 3; EF-1-alpha-like 3; Eukaryotic elongation factor 1 A-like 3; eEF1A-like 3; Eukaryotic translation elongation factor 1 alpha-1 pseudogene 5
Molecular Weight :	50KD

Product Images



Western Blot analysis of A549 cells using Acetyl-EF-1 α 1/2 (K41) Polyclonal Antibody.. Secondary antibody was diluted at 1:20000



Western Blot analysis of A549 cells using Acetyl-EF-1 α 1/2 (K41) Polyclonal Antibody. Secondary antibody was diluted at 1:20000