

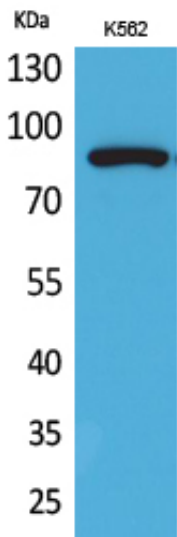
HSP 90 (Acetyl Lys292/284) Polyclonal Antibody

Catalog_no :	AK0029
Applications :	WB,IHC-p,ELISA
Reactivity :	Human,Mouse,Rat
Category :	抗原抗体
Size :	100µg/50µg/20µg
Gene_name :	HSP90AA1/HSP90AB1
Protein_name :	Heat shock protein HSP 90-alpha/Heat shock protein HSP 90-beta
Humangene_id :	3326
Humanswissprot_no :	P07900
Mousegene_id :	15519
Mouseswissprot_no :	P07901
Ratgene_id :	299331
Ratswissprot_no :	P82995
Immunogen :	The antiserum was produced against synthesized Acetyl-peptide derived from human HSP90A/B around the Acetylation site of Lys292/284. AA range:251-300
Specificity :	Acetyl-HSP 90 (K292/284) Polyclonal Antibody detects endogenous levels of HSP 90 protein only when acetylated at K292/284.
Formulation :	Liquid in PBS containing 50% glycerol, 0.5% BSA and 0.02% sodium azide.
Source :	Rabbit
Dilution :	Western Blot: 1/500 - 1/2000. IHC-p: 1:100-300 ELISA: 1/20000. Not yet tested in other applications.
Purification :	The antibody was affinity-purified from rabbit antiserum by affinity-chromatography using epitope-specific immunogen.
Concentration :	1 mg/ml
Storage_stability :	-20°C/1 year

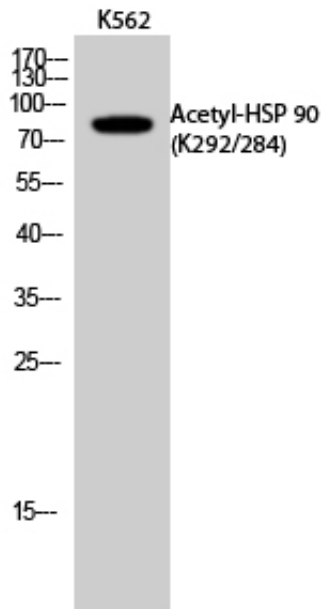


MsdS :	MSDS_Antibody.pdf
Other_name :	HSP90AA1; HSP90A; HSPC1; HSPCA; Heat shock protein HSP 90-alpha; Heat shock 86 kDa; HSP 86; HSP86; Renal carcinoma antigen NY-REN-38; HSP90AB1; HSP90B; HSPC2; HSPCB; Heat shock protein HSP 90-beta; HSP 90; Heat shock 84 kDa; HSP 84; HSP84
Molecular Weight :	85KD

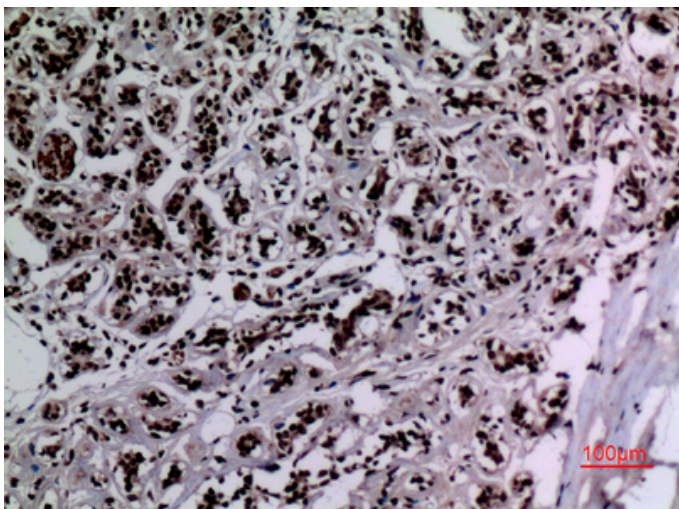
Product Images



Western Blot analysis of K562 cells using Acetyl-HSP 90 (K292/284) Polyclonal Antibody.. Secondary antibody was diluted at 1:20000

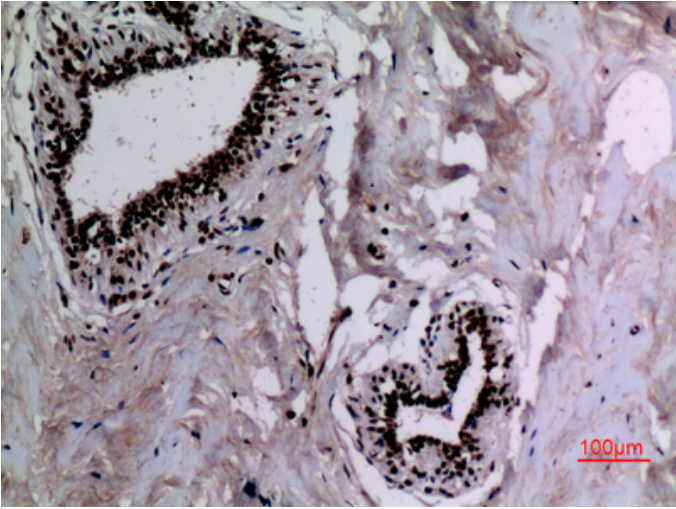


Western Blot analysis of K562 cells using Acetyl-HSP 90 (K292/284) Polyclonal Antibody. Secondary antibody was diluted at 1:20000

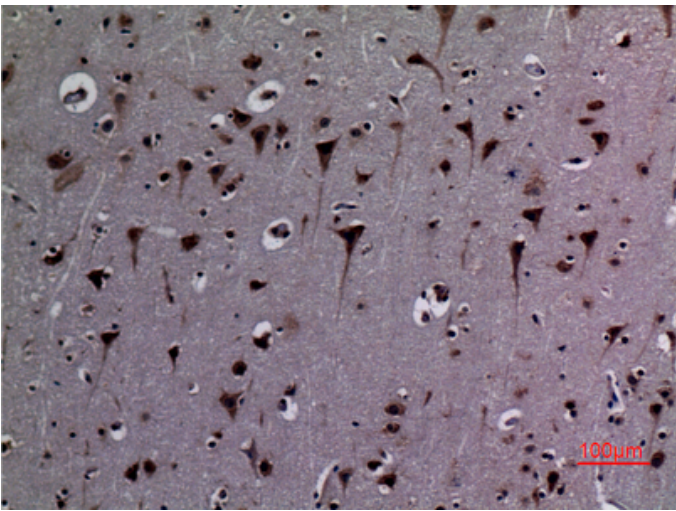


Immunohistochemical analysis of paraffin-embedded human-breast, antibody was diluted at 1:100

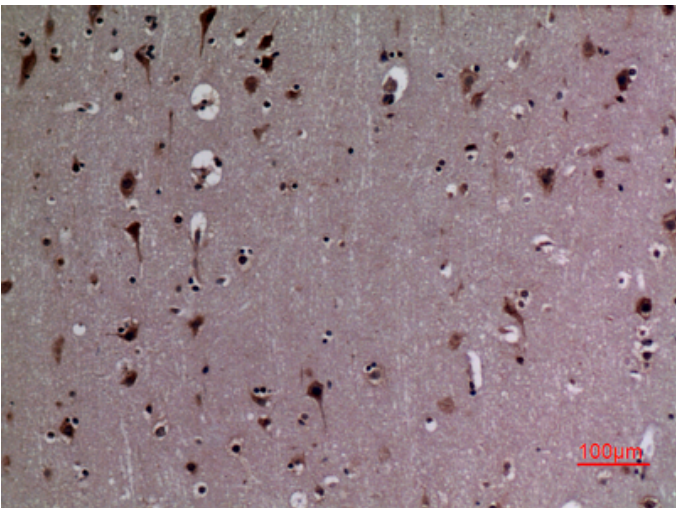
Immunohistochemical analysis of paraffin-embedded



human-breast, antibody was diluted at 1:100



Immunohistochemical analysis of paraffin-embedded human-brain, antibody was diluted at 1:100



Immunohistochemical analysis of paraffin-embedded human-brain, antibody was diluted at 1:100