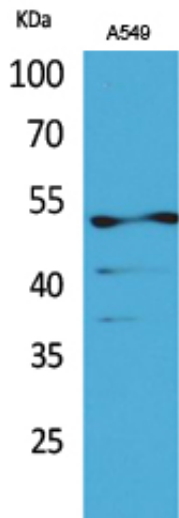


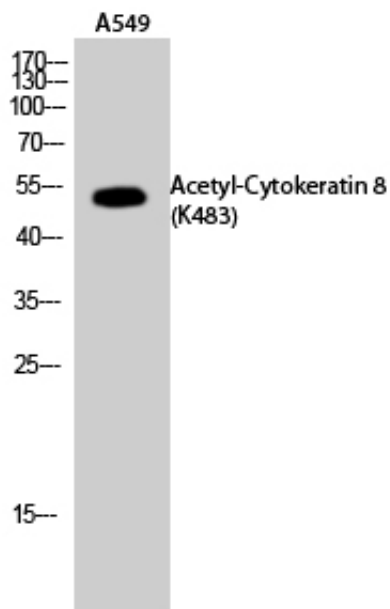
Cytokeratin 8 (Acetyl Lys483) Polyclonal Antibody

Catalog_no :	AK0031
Applications :	WB,IHC-p,ELISA
Reactivity :	Human
Category :	抗原抗体
Size :	100µg/50µg/20µg
Gene_name :	KRT8
Protein_name :	Keratin, type II cytoskeletal 8
Humangene_id :	3856
Humanswissprot_no :	P05787
Immunogen :	The antiserum was produced against synthesized Acetyl-peptide derived from human K8 around the Acetylation site of Lys483. AA range:434-483
Specificity :	Acetyl-Cytokeratin 8 (K483) Polyclonal Antibody detects endogenous levels of Cytokeratin 8 protein only when acetylated at K483.
Formulation :	Liquid in PBS containing 50% glycerol, 0.5% BSA and 0.02% sodium azide.
Source :	Rabbit
Dilution :	Western Blot: 1/500 - 1/2000. IHC-p: 1:100-300 ELISA: 1/20000. Not yet tested in other applications.
Purification :	The antibody was affinity-purified from rabbit antiserum by affinity-chromatography using epitope-specific immunogen.
Concentration :	1 mg/ml
Storage_stability :	-20°C/1 year
Msds :	MSDS_Antibody.pdf
Other_name :	KRT8; CYK8; Keratin, type II cytoskeletal 8; Cytokeratin-8; CK-8; Keratin-8; K8; Type-II keratin Kb8
Molecular Weight :	53KD

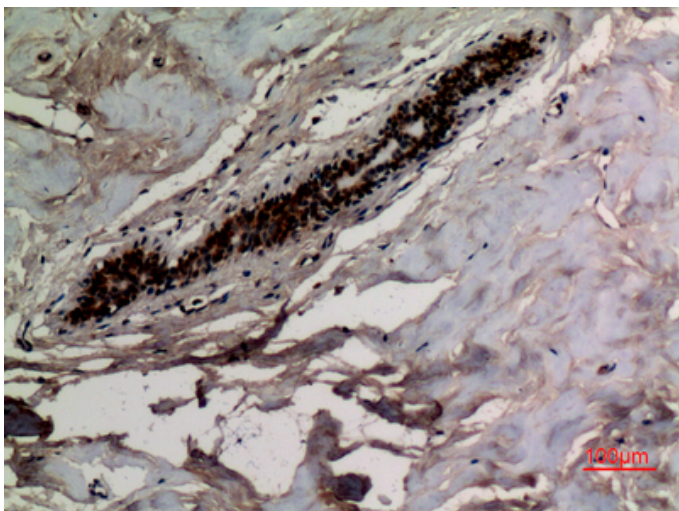
Product Images



Western Blot analysis of A549 cells using Acetyl-Cytokeratin 8 (K483) Polyclonal Antibody.. Secondary antibody was diluted at 1:20000



Western Blot analysis of A549 cells using Acetyl-Cytokeratin 8 (K483) Polyclonal Antibody. Secondary antibody was diluted at 1:20000



Immunohistochemical analysis of paraffin-embedded human-breast, antibody was diluted at 1:100



专注二抗产品

Biodragon旗下品牌
