

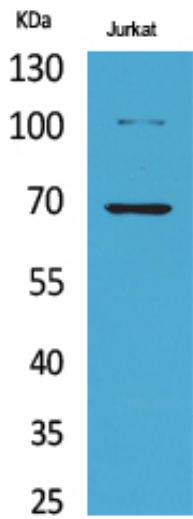
Ku-70 (Acetyl Lys542) Polyclonal Antibody

Catalog_no :	AK0033
Applications :	WB,IHC-p,ELISA
Reactivity :	Human
Category :	抗原抗体
Size :	100µg/50µg/20µg
Gene_name :	XRCC6
Protein_name :	X-ray repair cross-complementing protein 6
Humangene_id :	2547
Humanswissprot_no :	P12956
Immunogen :	Synthesized acetyl-peptide derived from the human Ku-70 around the acetylation site of K542.
Specificity :	Acetyl-Ku-70 (K542) Polyclonal Antibody detects endogenous levels of Ku-70 protein only when acetylated at K542.
Formulation :	Liquid in PBS containing 50% glycerol, 0.5% BSA and 0.02% sodium azide.
Source :	Rabbit
Dilution :	Western Blot: 1/500 - 1/2000. IHC-p: 1:100-300 ELISA: 1/20000. Not yet tested in other applications.
Purification :	The antibody was affinity-purified from rabbit antiserum by affinity-chromatography using epitope-specific immunogen.
Concentration :	1 mg/ml
Storage_stability :	-20°C/1 year
Msds :	MSDS_Antibody.pdf
Other_name :	XRCC6; G22P1; X-ray repair cross-complementing protein 6; 5'-deoxyribose-5-phosphate lyase Ku70; 5'-dRP lyase Ku70; 70 kDa subunit of Ku antigen; ATP-dependent DNA helicase 2 subunit 1; ATP-dependent DNA helicase II 70 kDa subunit; CTC box-binding factor 75 kDa subunit; CTC75; CTCBF; DNA repair protein XRCC6; Lupus Ku autoantigen protein p70; Ku70; Thyroid-lupus autoantigen; TLAA; X-ray repair complementing defective repair in Chinese hamster cells 6
Molecular	100KD,70KD

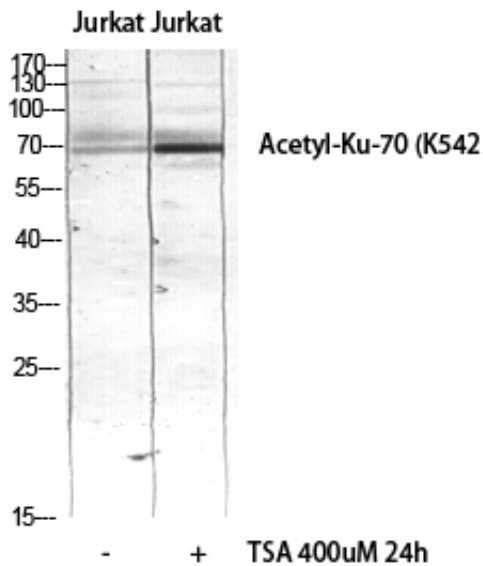


Weight :

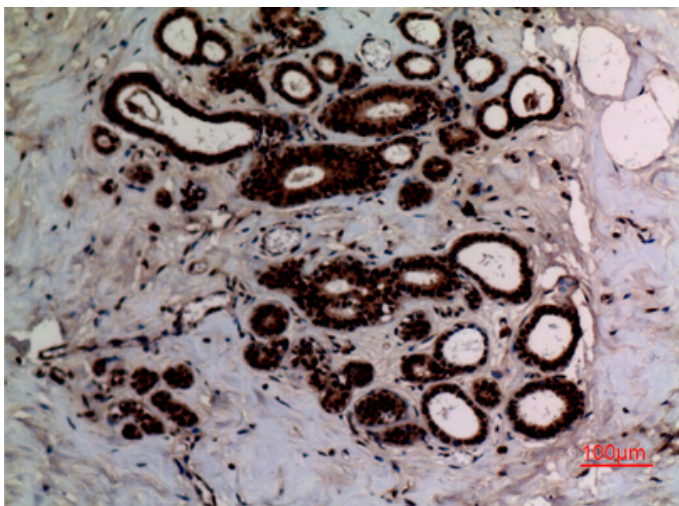
Product Images



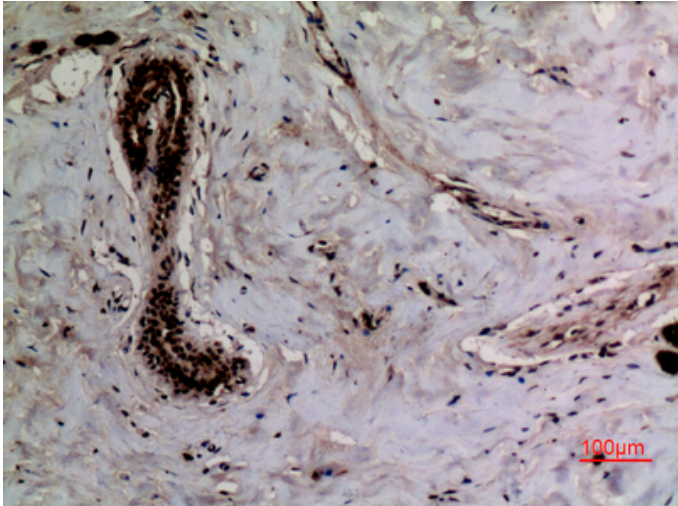
Western Blot analysis of Jurkat cells using Acetyl-Ku-70 (K542) Polyclonal Antibody.. Secondary antibody was diluted at 1:20000



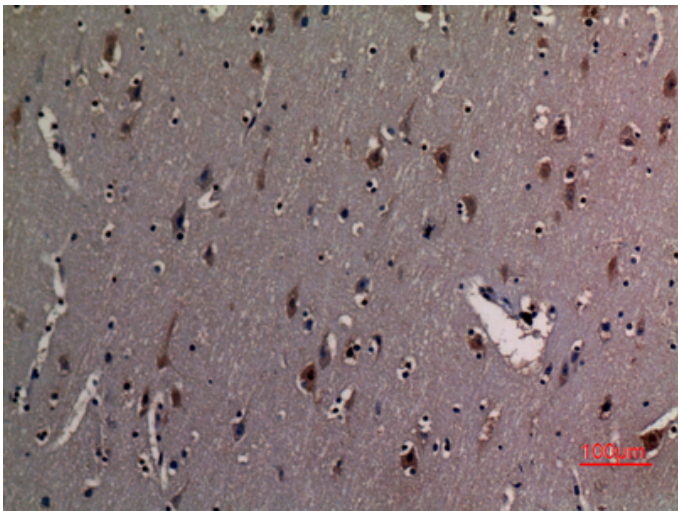
Western blot analysis of JK lysis using Acetyl-Ku-70 (K542) antibody.. Secondary antibody was diluted at 1:20000



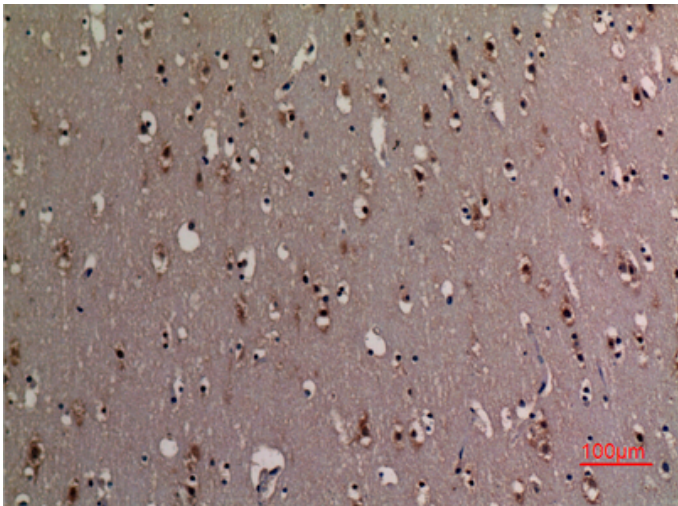
Immunohistochemical analysis of paraffin-embedded human-breast, antibody was diluted at 1:100



Immunohistochemical analysis of paraffin-embedded human-breast, antibody was diluted at 1:100



Immunohistochemical analysis of paraffin-embedded human-brain, antibody was diluted at 1:100



Immunohistochemical analysis of paraffin-embedded human-brain, antibody was diluted at 1:100