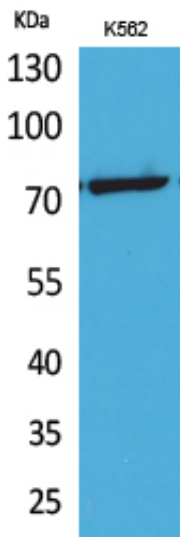


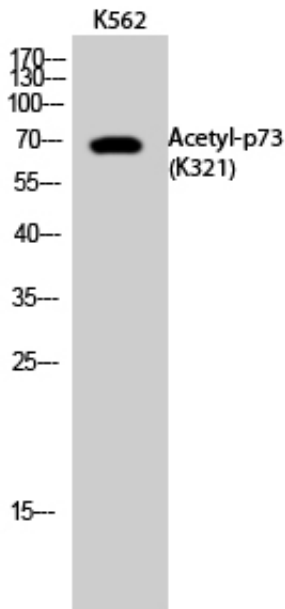
p73 (Acetyl Lys321) Polyclonal Antibody

Catalog_no :	AK0037
Applications :	WB,IHC-p,ELISA
Reactivity :	Human
Category :	抗原抗体
Size :	100µg/50µg/20µg
Gene_name :	TP73
Protein_name :	Tumor protein p73
Humangene_id :	7161
Humanswissprot_no :	O15350
Immunogen :	The antiserum was produced against synthesized Acetyl-peptide derived from human p73 around the Acetylation site of Lys321. AA range:281-330
Specificity :	Acetyl-p73 (K321) Polyclonal Antibody detects endogenous levels of p73 protein only when acetylated at K321.
Formulation :	Liquid in PBS containing 50% glycerol, 0.5% BSA and 0.02% sodium azide.
Source :	Rabbit
Dilution :	Western Blot: 1/500 - 1/2000. IHC-p: 1:100-300 ELISA: 1/20000. Not yet tested in other applications.
Purification :	The antibody was affinity-purified from rabbit antiserum by affinity-chromatography using epitope-specific immunogen.
Concentration :	1 mg/ml
Storage_stability :	-20°C/1 year
Msds :	MSDS_Antibody.pdf
Other_name :	TP73; P73; Tumor protein p73; p53-like transcription factor; p53-related protein
Molecular Weight :	70KD

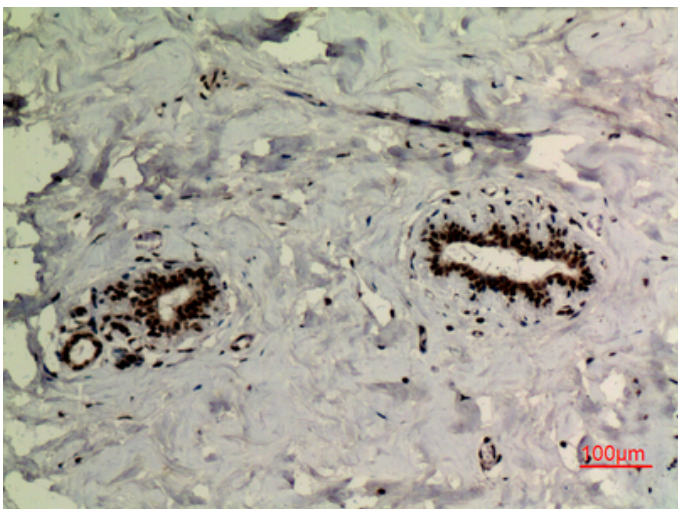
Product Images



Western Blot analysis of K562 cells using Acetyl-p73 (K321) Polyclonal Antibody.. Secondary antibody was diluted at 1:20000

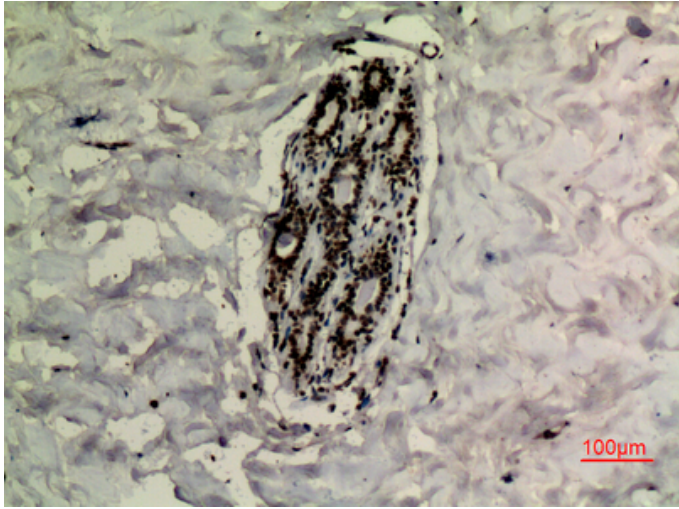


Western Blot analysis of K562 cells using Acetyl-p73 (K321) Polyclonal Antibody. Secondary antibody was diluted at 1:20000

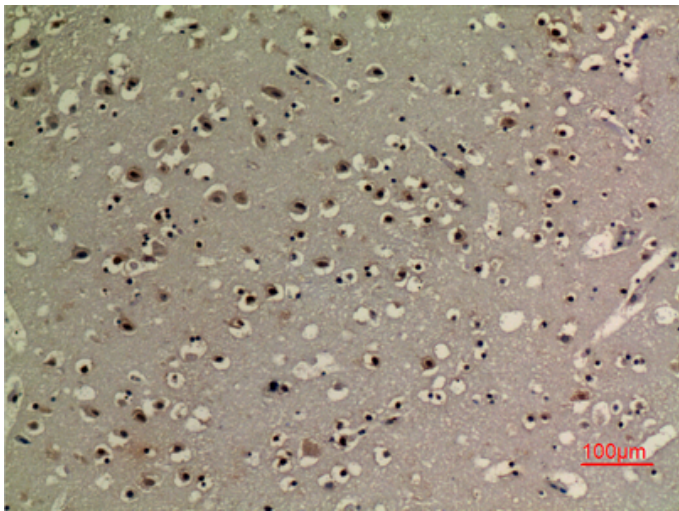


Immunohistochemical analysis of paraffin-embedded human-breast, antibody was diluted at 1:100

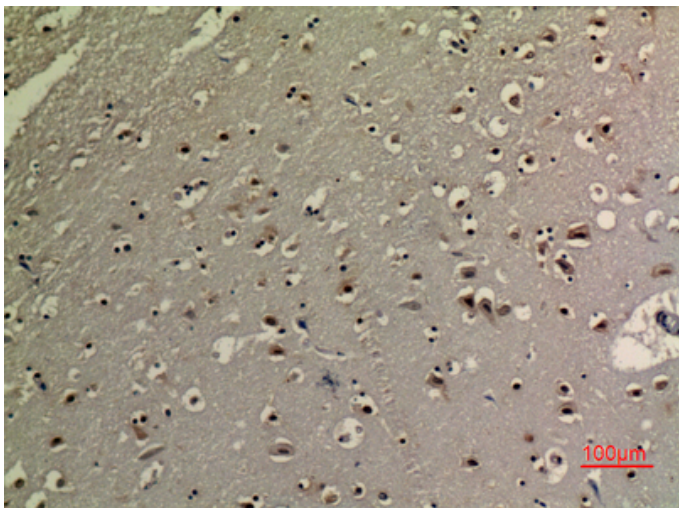
Immunohistochemical analysis of paraffin-embedded



human-breast, antibody was diluted at 1:100



Immunohistochemical analysis of paraffin-embedded human-brain, antibody was diluted at 1:100



Immunohistochemical analysis of paraffin-embedded human-brain, antibody was diluted at 1:100