

Tubulin α (Acetyl Lys40) Polyclonal Antibody

Catalog_no :	<u>AK0039</u>
Applications :	<u>WB,IHC-p,ELISA</u>
Reactivity :	<u>Human,Mouse,Rat</u>
Category :	<u>抗原抗体</u>
Size :	<u>100μg/50μg/20μg</u>
Gene_name :	<u>TUBA1A/TUBA1B/TUBA1C/TUBA3C/TUBA4A</u>
Protein_name :	<u>Tubulin alpha-1A chain/Tubulin alpha-1B chain/Tubulin alpha-1C chain/Tubulin alpha-3C/D chain/Tubulin alpha-4A chain</u>
Humangene_id :	<u>7846</u>
Humanswissprot_no :	<u>Q71U36</u>
Mousegene_id :	<u>22142</u>
Mouseswissprot_no :	<u>P68369</u>
Ratgene_id :	<u>64158</u>
Ratswissprot_no :	<u>P68370</u>
Immunogen :	<u>The antiserum was produced against synthesized Acetyl-peptide derived from human TUBA1A around the Acetylation site of Lys40. AA range:1-50</u>
Specificity :	<u>Acetyl-Tubulin α (K40) Polyclonal Antibody detects endogenous levels of Tubulin α protein only when acetylated at K40.</u>
Formulation :	<u>Liquid in PBS containing 50% glycerol, 0.5% BSA and 0.02% sodium azide.</u>
Source :	<u>Rabbit</u>
Dilution :	<u>Western Blot: 1/500 - 1/2000. IHC-p: 1:100-300 ELISA: 1/20000. Not yet tested in other applications.</u>
Purification :	<u>The antibody was affinity-purified from rabbit antiserum by affinity-chromatography using epitope-specific immunogen.</u>
Concentration :	<u>1 mg/ml</u>
Storage_stability :	<u>-20°C/1 year</u>

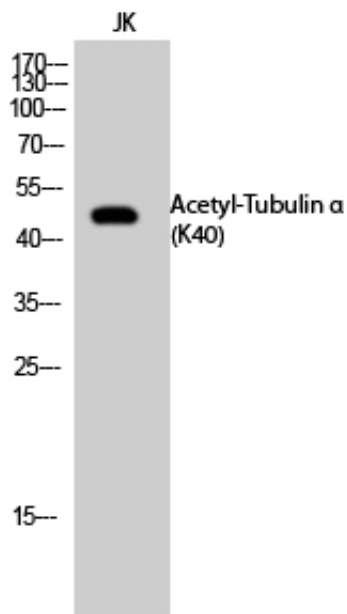


MsdS :	MSDS_Antibody.pdf
Other_name :	TUBA1A; TUBA3; Tubulin alpha-1A chain; Alpha-tubulin 3; Tubulin B-alpha-1; Tubulin alpha-3 chain; TUBA1B; Tubulin alpha-1B chain; Alpha-tubulin ubiquitous; Tubulin K-alpha-1; Tubulin alpha-ubiquitous chain; TUBA1C; TUBA6;Tubulin alpha-6 chain; TUBA3C; TUBA2; TUBA3D; Tubulin alpha-3C/D chain; Alpha-tubulin 2; Alpha-tubulin 3C/D; Tubulin alpha-2 chain; TUBA4A; TUBA1; Tubulin alpha-4A chain; Alpha-tubulin 1; Testis-specific alpha-tubulin;
Molecular Weight :	50KD

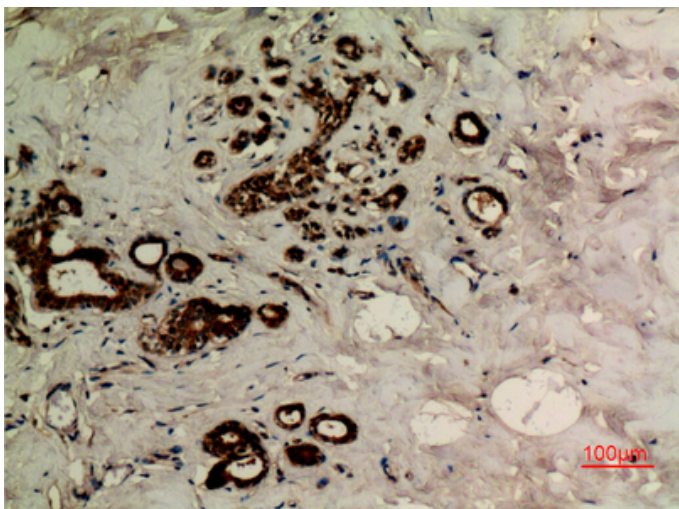
Product Images



Western Blot analysis of Jurkat cells using Acetyl-Tubulin α (K40) Polyclonal Antibody.. Secondary antibody was diluted at 1:20000

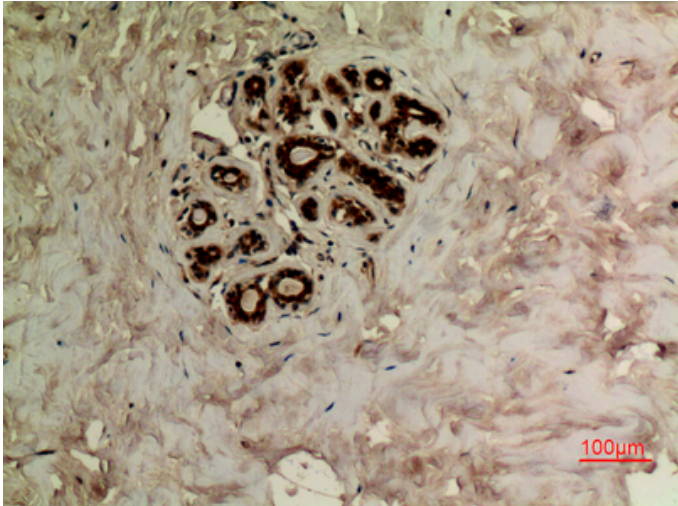


Western Blot analysis of JK cells using Acetyl-Tubulin α (K40) Polyclonal Antibody. Secondary antibody was diluted at 1:20000

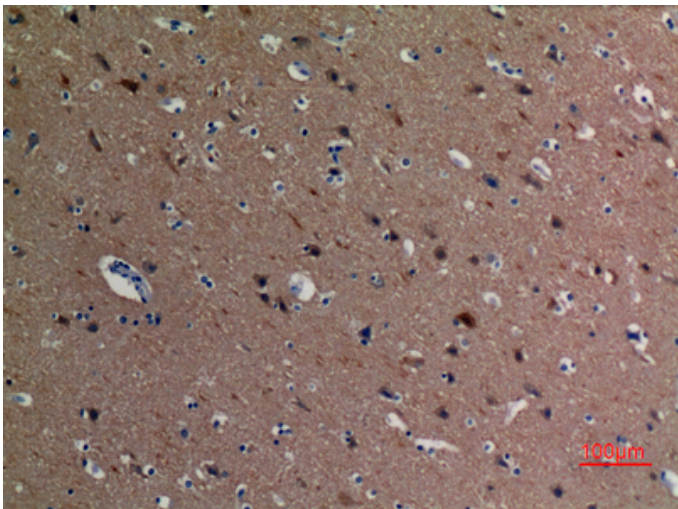


Immunohistochemical analysis of paraffin-embedded human-breast, antibody was diluted at 1:100

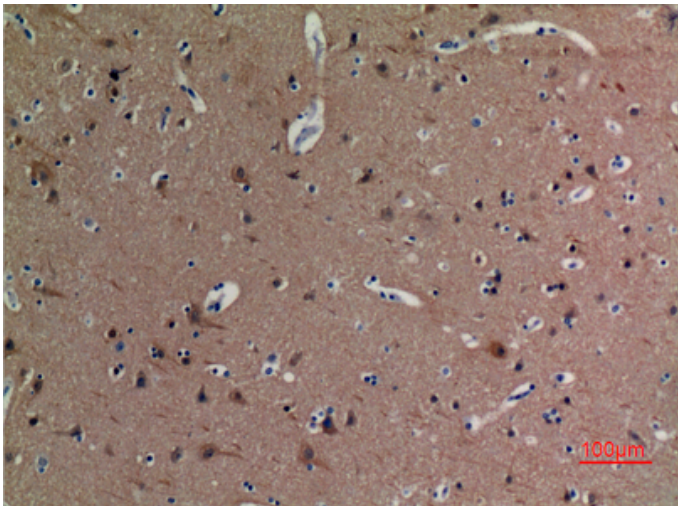
Immunohistochemical analysis of paraffin-embedded



human-breast, antibody was diluted at 1:100



Immunohistochemical analysis of paraffin-embedded human-brain, antibody was diluted at 1:100



Immunohistochemical analysis of paraffin-embedded human-brain, antibody was diluted at 1:100