

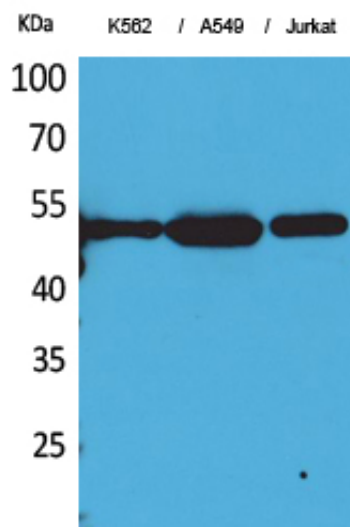
Tubulin α (Acetyl Lys352) Polyclonal Antibody

Catalog_no :	AK0040
Applications :	WB,ELISA
Reactivity :	Human,Mouse,Rat
Category :	抗原抗体
Size :	100 μ g/50 μ g/20 μ g
Gene_name :	TUBA1A/TUBA1B/TUBA1C/TUBA3C/TUBA4A/TUBA8
Protein_name :	Tubulin alpha-1A chain/Tubulin alpha-1B chain/Tubulin alpha-1C chain/Tubulin alpha-3C/D chain/Tubulin alpha-4A chain/Tubulin alpha-8 chain
Humangene_id :	7846
Humanswissprot_no :	Q71U36
Mousegene_id :	22142
Mouseswissprot_no :	P68369
Ratgene_id :	64158
Ratswissprot_no :	P68370
Immunogen :	The antiserum was produced against synthesized Acetyl-peptide derived from human TUBA1B around the Acetylation site of Lys352. AA range:311-360
Specificity :	Acetyl-Tubulin α (K352) Polyclonal Antibody detects endogenous levels of Tubulin α protein only when acetylated at K352.
Formulation :	Liquid in PBS containing 50% glycerol, 0.5% BSA and 0.02% sodium azide.
Source :	Rabbit
Dilution :	Western Blot: 1/500 - 1/2000. ELISA: 1/20000. Not yet tested in other applications.
Purification :	The antibody was affinity-purified from rabbit antiserum by affinity-chromatography using epitope-specific immunogen.
Concentration :	1 mg/ml
Storage_stability :	-20°C/1 year

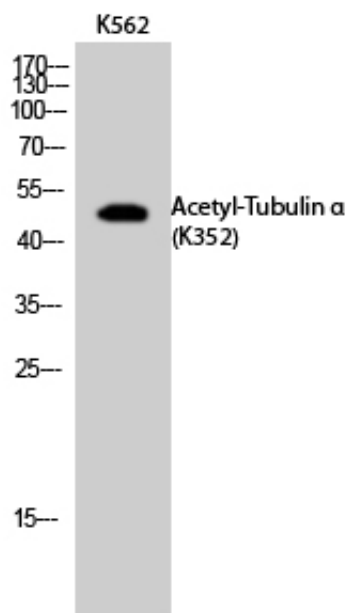


MsdS :	MSDS_Antibody.pdf
Other_name :	TUBA1A; TUBA3; Tubulin alpha-1A chain; Alpha-tubulin 3; Tubulin B-alpha-1; Tubulin alpha-3 chain; TUBA1B; Tubulin alpha-1B chain; Alpha-tubulin ubiquitous; Tubulin K-alpha-1; Tubulin alpha-ubiquitous chain; TUBA1C; TUBA6;Tubulin alpha-6 chain; TUBA3C; TUBA2; TUBA3D; Tubulin alpha-3C/D chain; Alpha-tubulin 2; Alpha-tubulin 3C/D; Tubulin alpha-2 chain; TUBA4A; TUBA1; Tubulin alpha-4A chain; Alpha-tubulin 1; Testis-specific alpha-tubulin;
Molecular Weight :	50KD

Product Images



Western Blot analysis of K562, A549, Jurkat cells using Acetyl-Tubulin α (K352) Polyclonal Antibody.. Secondary antibody was diluted at 1:20000



Western Blot analysis of K562 cells using Acetyl-Tubulin α (K352) Polyclonal Antibody. Secondary antibody was diluted at 1:20000