

BMAL1 (Acetyl Lys538) Polyclonal Antibody

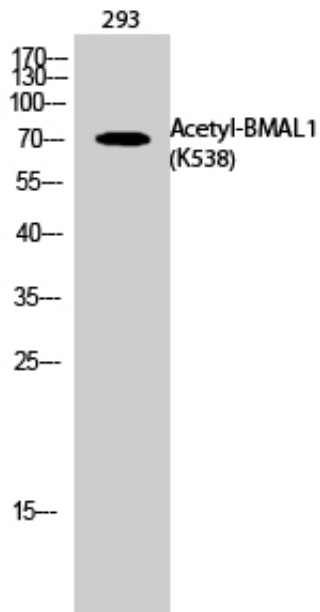
Catalog_no :	AK0041
Applications :	WB,ELISA
Reactivity :	Human,Mouse,Rat
Category :	抗原抗体
Size :	100µg/50µg/20µg
Gene_name :	ARNTL
Protein_name :	Aryl hydrocarbon receptor nuclear translocator-like protein 1
Humangene_id	406
:	
Humanswissprot	O00327
_no :	
Mousegene_id :	11865
Mouseswissprot	Q9WTL8
_no :	
Ratgene_id :	29657
Ratswissprot_no	Q9EPW1
:	
Immunogen :	The antiserum was produced against synthesized Acetyl-peptide derived from human BMAL1 around the Acetylation site of Lys538. AA range:501-550
Specificity :	Acetyl-BMAL1 (K538) Polyclonal Antibody detects endogenous levels of BMAL1 protein only when acetylated at K538.
Formulation :	Liquid in PBS containing 50% glycerol, 0.5% BSA and 0.02% sodium azide.
Source :	Rabbit
Dilution :	Western Blot: 1/500 - 1/2000. ELISA: 1/20000. Not yet tested in other applications.
Purification :	The antibody was affinity-purified from rabbit antiserum by affinity-chromatography using epitope-specific immunogen.
Concentration :	1 mg/ml
Storage_stability	-20°C/1 year
:	
Msds :	MSDS_Antibody.pdf



Other_name : ARNTL; BHLHE5; BMAL1; MOP3; PASD3; Aryl hydrocarbon receptor nuclear translocator-like protein 1; Basic-helix-loop-helix-PAS protein MOP3Brain and muscle ARNT-like 1; Class E basic helix-loop-helix protein 5; bHLHe5; Member of PAS protein 3; PAS domain-containing protein 3; bHLH-PAS protein JAP3

Molecular Weight : 70KD

Product Images



Western Blot analysis of 293 cells using Acetyl-BMAL1 (K538) Polyclonal Antibody.. Secondary antibody was diluted at 1:20000