

Cytokeratin-pan (Acetyl Lys194) Polyclonal Antibody

Catalog_no :	<u>AK0042</u>
Applications :	<u>WB,ELISA</u>
Reactivity :	<u>Human,Mouse,Rat</u>
Category :	<u>抗原抗体</u>
Size :	<u>100µg/50µg/20µg</u>
Gene_name :	<u>KRT2/KRT76/KRT3/KRT5/KRT6A/KRT6B/KRT6C/KRT71/KRT72/KRT73/KRT74/KRT75/KRT79/ KRT8/KRT84</u>
Protein_name :	<u>Keratin type II cytoskeletal 2 epidermal/Keratin type II cytoskeletal 2 oral/Keratin type II cytoskeletal 3/Keratin type II cytoskeletal 5/Keratin type II cytoskeletal 6A</u>
Humangene_id :	<u>3849/51350/3850/3852/3853/3854/286887/112802/140807/319101/121391/9119/33878 5/3856/3890</u>
Humanswissprot_no :	<u>P35908/Q01546/P12035/P13647/P02538/P04259/P48668/Q3SY84/Q14CN4/Q86Y46/Q7R TS7/O95678/Q5XKE5/P08729/P05787/Q9NSB2</u>
Ratswissprot_no :	<u>Q6IG02/Q6P6Q2</u>
Immunogen :	<u>The antiserum was produced against synthesized Acetyl-peptide derived from human Keratin-pan around the Acetylation site of Lys194. AA range:151-200</u>
Specificity :	<u>Acetyl-Cytokeratin-pan (K194) Polyclonal Antibody detects endogenous levels of Cytokeratin protein only when acetylated at K194.</u>
Formulation :	<u>Liquid in PBS containing 50% glycerol, 0.5% BSA and 0.02% sodium azide.</u>
Source :	<u>Rabbit</u>
Dilution :	<u>Western Blot: 1/500 - 1/2000. ELISA: 1/20000. Not yet tested in other applications.</u>
Purification :	<u>The antibody was affinity-purified from rabbit antiserum by affinity-chromatography using epitope-specific immunogen.</u>
Concentration :	<u>1 mg/ml</u>
Storage_stability :	<u>-20°C/1 year</u>
Msds :	<u>MSDS_Antibody.pdf</u>
Other_name :	<u>KRT2; KRT2A; KRT2E; Keratin, type II cytoskeletal 2 epidermal; Cytokeratin-2e; CK-2e; Epithelial keratin-2e; Keratin-2 epidermis; Keratin-2e; K2e; Type-II keratin Kb2; KRT76; KRT2B; KRT2P; Keratin, type II cytoskeletal 2 oral; Cytokeratin-2PCK-2P; K2P; Keratin-76; K76; Type-II keratin Kb9; KRT3; Keratin, type II cytoskeletal 3; 65 kDa cytokeratin;</u>

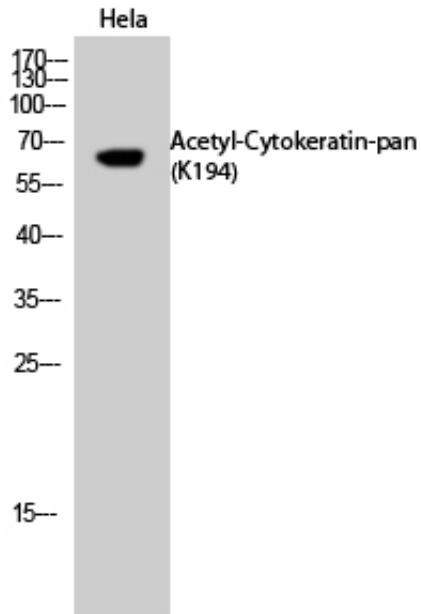


Cytokeratin-3; CK-3; Keratin-3; K3; Type-II keratin Kb3; KRT5; Keratin, type II cytoskeletal 5; 58 kDa cytokeratin; Cytokeratin-5; CK-5; Keratin-5

Molecular
Weight :

65KD

Product Images



Western Blot analysis of HeLa cells using Acetyl-Cytokeratin-pan (K194) Polyclonal Antibody.. Secondary antibody was diluted at 1:20000