

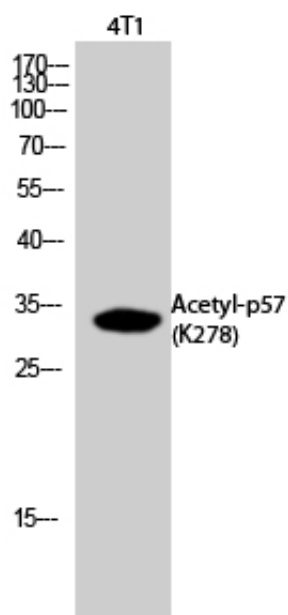
p57 (Acetyl Lys278) Polyclonal Antibody

Catalog_no :	AK0044
Applications :	WB,ELISA
Reactivity :	Human,Mouse,Rat
Category :	抗原抗体
Size :	100µg/50µg/20µg
Gene_name :	CDKN1C
Protein_name :	Cyclin-dependent kinase inhibitor 1C
Humangene_id :	1028
Humanswissprot_no :	P49918
Mousegene_id :	12577
Mouseswissprot_no :	P49919
Immunogen :	The antiserum was produced against synthesized Acetyl-peptide derived from human p57Kip2 around the Acetylation site of Lys278. AA range:241-290
Specificity :	Acetyl-p57 (K278) Polyclonal Antibody detects endogenous levels of p57 protein only when acetylated at K278.
Formulation :	Liquid in PBS containing 50% glycerol, 0.5% BSA and 0.02% sodium azide.
Source :	Rabbit
Dilution :	Western Blot: 1/500 - 1/2000. ELISA: 1/20000. Not yet tested in other applications.
Purification :	The antibody was affinity-purified from rabbit antiserum by affinity-chromatography using epitope-specific immunogen.
Concentration :	1 mg/ml
Storage_stability :	-20°C/1 year
Msds :	MSDS_Antibody.pdf
Other_name :	CDKN1C; KIP2; Cyclin-dependent kinase inhibitor 1C; Cyclin-dependent kinase inhibitor p57; p57Kip2
Molecular	33KD



Weight :

Product Images



Western Blot analysis of 4T1 cells using Acetyl-p57 (K278) Polyclonal Antibody.. Secondary antibody was diluted at 1:20000