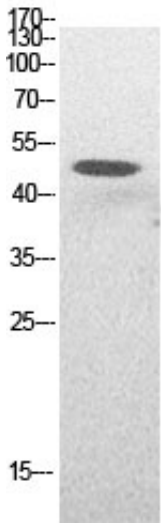


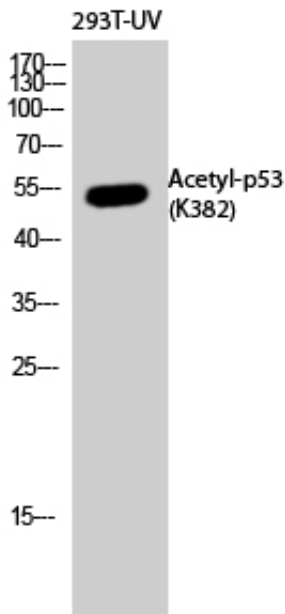
## p53 (Acetyl Lys382) Polyclonal Antibody

Catalog_no :	AK0047
Applications :	WB,IHC-p,ELISA
Reactivity :	Human
Category :	抗原抗体
Size :	100µg/50µg/20µg
Gene_name :	TP53
Protein_name :	Cellular tumor antigen p53
Humangene_id :	<a href="#">7157</a>
Humanswissprot_no :	<a href="#">P04637</a>
Immunogen :	Synthesized acetyl-peptide derived from the human p53 around the acetylation site of K382.
Specificity :	Acetyl-p53 (K382) Polyclonal AntibodySynthesized peptide derived from the human p53 around the acetylation site of K382.
Formulation :	Liquid in PBS containing 50% glycerol, 0.5% BSA and 0.02% sodium azide.
Source :	Rabbit
Dilution :	Western Blot: 1/500 - 1/2000. IHC-p: 1:100-300 ELISA: 1/20000. Not yet tested in other applications.
Purification :	The antibody was affinity-purified from rabbit antiserum by affinity-chromatography using epitope-specific immunogen.
Concentration :	1 mg/ml
Storage_stability :	-20°C/1 year
Msds :	MSDS_Antibody.pdf
Other_name :	TP53; P53; Cellular tumor antigen p53; Antigen NY-CO-13; Phosphoprotein p53; Tumor suppressor p53
Molecular Weight :	53KD

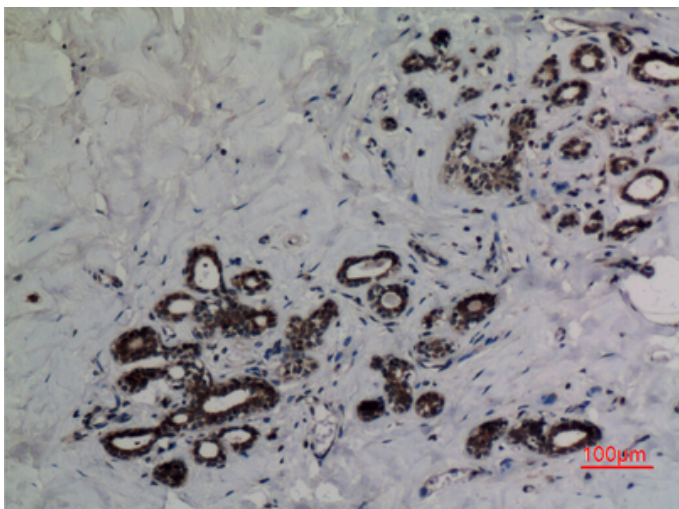
## Product Images



Western Blot analysis of HepG2 cells using Acetyl-p53 (K382) Polyclonal Antibody. Antibody was diluted at 1:500. Secondary antibody was diluted at 1:20000

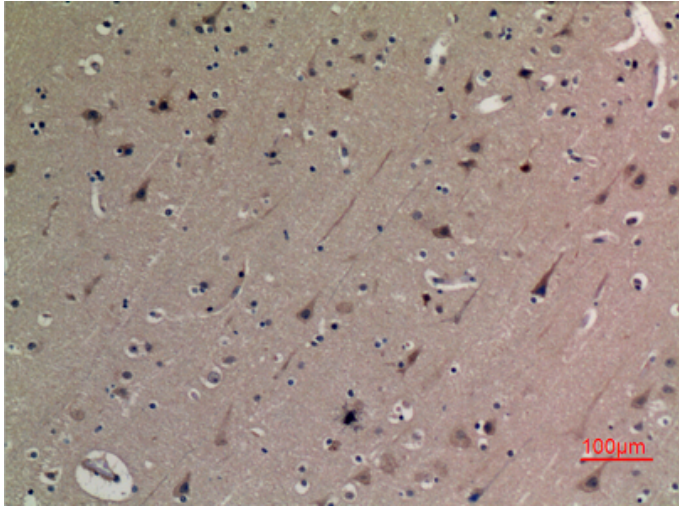


Western Blot analysis of 293T-UV cells using Acetyl-p53 (K382) Polyclonal Antibody diluted at 1 : 500. Secondary antibody was diluted at 1:20000

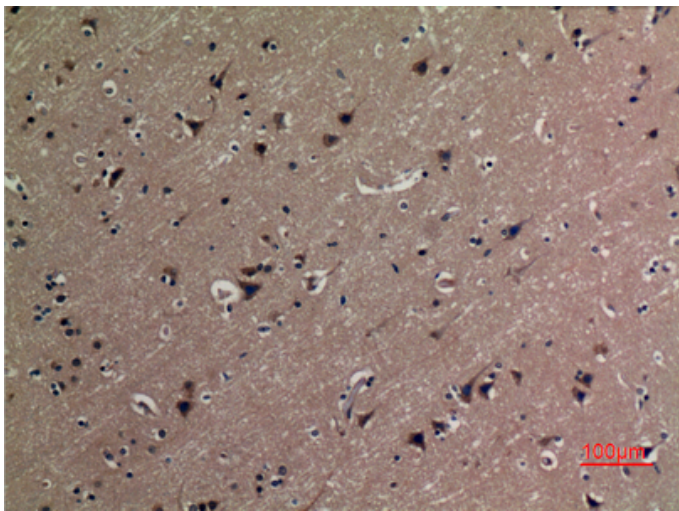


Immunohistochemical analysis of paraffin-embedded human-breast, antibody was diluted at 1:100

Immunohistochemical analysis of paraffin-embedded



human-brain, antibody was diluted at 1:100



Immunohistochemical analysis of paraffin-embedded human-brain, antibody was diluted at 1:100