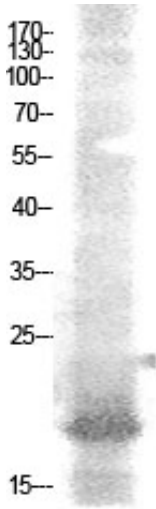




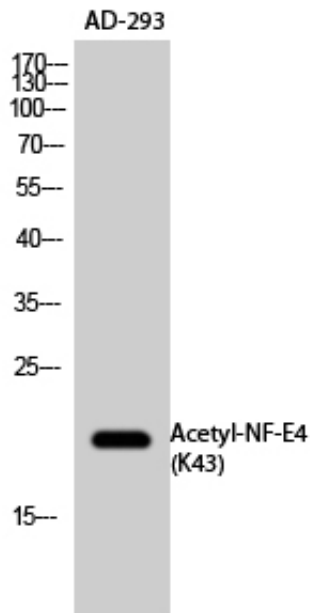
## NF-E4 (Acetyl Lys43) Polyclonal Antibody

Catalog_no :	AK0049
Applications :	WB,ELISA
Reactivity :	Human
Category :	抗原抗体
Size :	100µg/50µg/20µg
Gene_name :	NFE4
Protein_name :	Transcription factor NF-E4
Humangene_id :	<a href="#">58160</a>
Humanswissprot_no :	<a href="#">Q86UQ8</a>
Immunogen :	Synthesized acetyl-peptide derived from the human NF-E4 around the acetylation site of K43.
Specificity :	Acetyl-NF-E4 (K43) Polyclonal AntibodySynthesized peptide derived from the human NF-E4 around the acetylation site of K43.
Formulation :	Liquid in PBS containing 50% glycerol, 0.5% BSA and 0.02% sodium azide.
Source :	Rabbit
Dilution :	Western Blot: 1/500 - 1/2000. ELISA: 1/20000. Not yet tested in other applications.
Purification :	The antibody was affinity-purified from rabbit antiserum by affinity-chromatography using epitope-specific immunogen.
Concentration :	1 mg/ml
Storage_stability :	-20°C/1 year
Msds :	MSDS_Antibody.pdf
Other_name :	NFE4; Transcription factor NF-E4
Molecular Weight :	19KD

## Product Images



Western Blot analysis of AD-293 cells using Acetyl-NF-E4 (K43) Polyclonal Antibody.. Secondary antibody was diluted at 1:20000



Western Blot analysis of AD-293 cells using Acetyl-NF-E4 (K43) Polyclonal Antibody. Secondary antibody was diluted at 1:20000