

NFκB-p65 (Acetyl Lys314/Lys315) Polyclonal Antibody

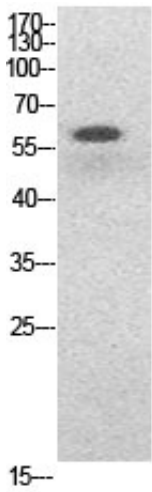
Catalog_no :	AK0050
Applications :	WB,IHC-p,ELISA
Reactivity :	Human,Mouse,Rat
Category :	抗原抗体
Size :	100μg/50μg/20μg
Gene_name :	RELA
Protein_name :	Transcription factor p65
Humangene_id	5970
:	
Humanswissprot	Q04206
_no :	
Mousegene_id :	19697
Mouseswissprot	Q04207
_no :	
Immunogen :	Synthesized acetyl-peptide derived from the human NFκB-p65 around the acetylation site of K314/K315.
Specificity :	Acetyl-NFκB-p65 (K314/K315) Polyclonal AntibodySynthesized peptide derived from the human NFκB-p65 around the acetylation site of K314/K315.
Formulation :	Liquid in PBS containing 50% glycerol, 0.5% BSA and 0.02% sodium azide.
Source :	Rabbit
Dilution :	Western Blot: 1/500 - 1/2000. IHC-p: 1:100-300 ELISA: 1/20000. Not yet tested in other applications.
Purification :	The antibody was affinity-purified from rabbit antiserum by affinity-chromatography using epitope-specific immunogen.
Concentration :	1 mg/ml
Storage_stability	-20°C/1 year
:	
Msds :	MSDS_Antibody.pdf
Other_name :	RELA; NFKB3; Transcription factor p65; Nuclear factor NF-kappa-B p65 subunit; Nuclear factor of kappa light polypeptide gene enhancer in B-cells 3



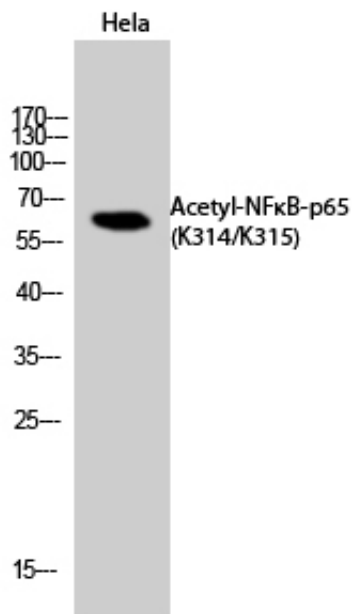
Molecular
Weight :

60KD

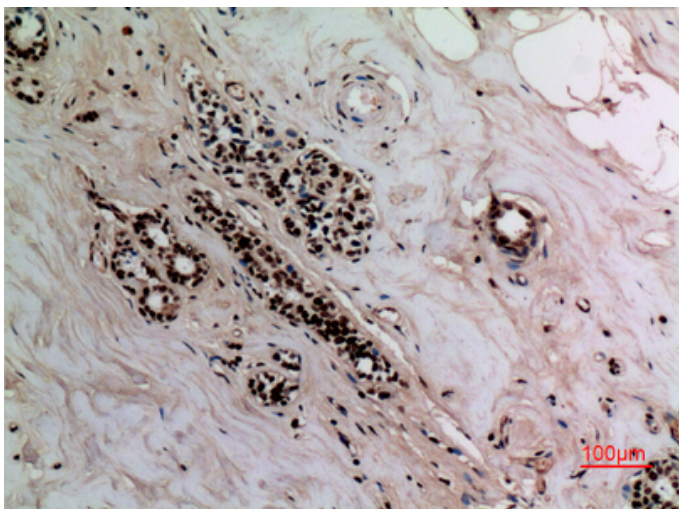
Product Images



Western Blot analysis of HeLa, HepG2 cells using Acetyl-NFκB-p65 (K314/K315) Polyclonal Antibody.. Secondary antibody was diluted at 1:20000

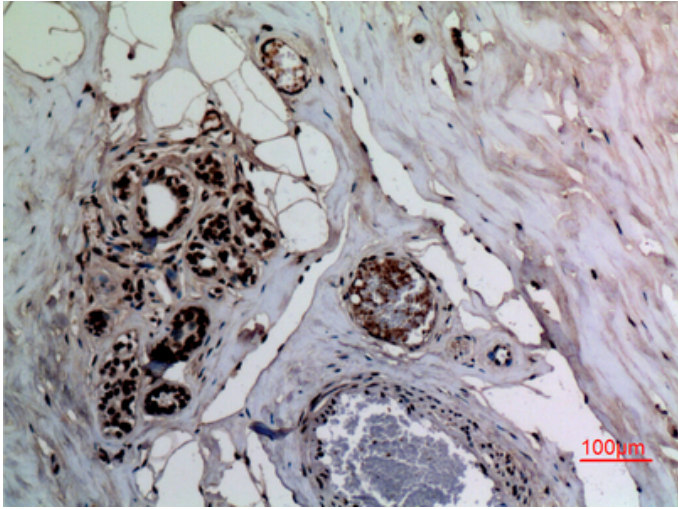


Western Blot analysis of HeLa cells using Acetyl-NFκB-p65 (K314/K315) Polyclonal Antibody. Secondary antibody was diluted at 1:20000

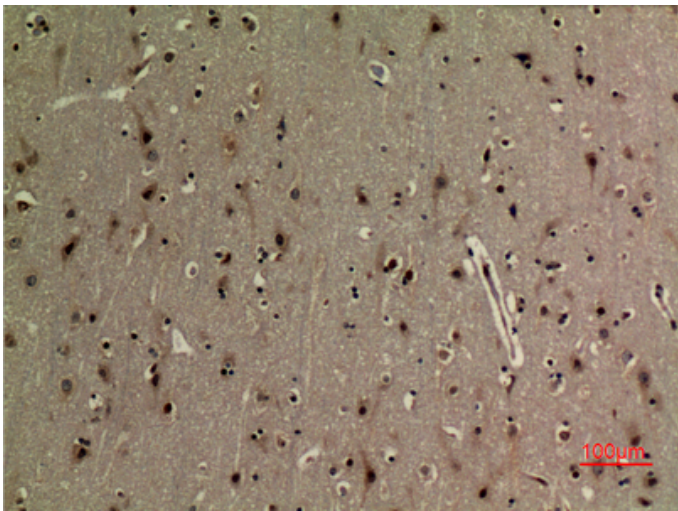


Immunohistochemical analysis of paraffin-embedded human-breast, antibody was diluted at 1:100

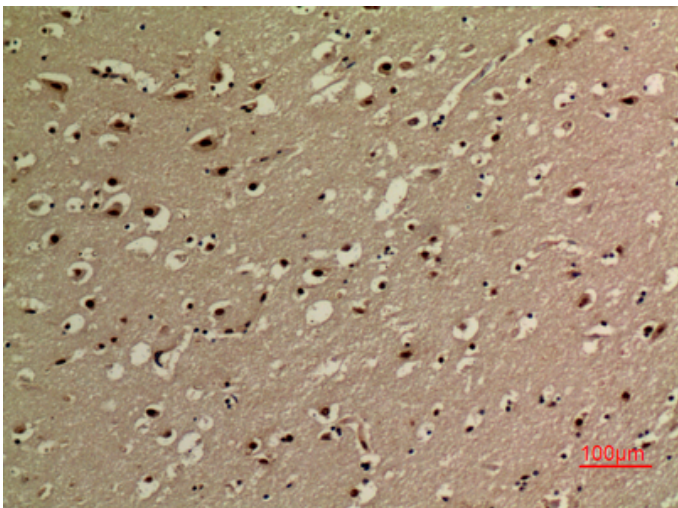
Immunohistochemical analysis of paraffin-embedded



human-breast, antibody was diluted at 1:100



Immunohistochemical analysis of paraffin-embedded human-brain, antibody was diluted at 1:100



Immunohistochemical analysis of paraffin-embedded human-brain, antibody was diluted at 1:100