



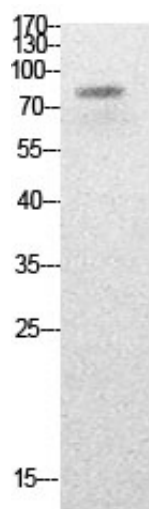
PCAF (Acetyl Lys428) Polyclonal Antibody

Catalog_no :	AK0052
Applications :	WB,ELISA
Reactivity :	Human,Mouse
Category :	抗原抗体
Size :	100µg/50µg/20µg
Gene_name :	KAT2B
Protein_name :	Histone acetyltransferase KAT2B
Humangene_id :	8850
Humanswissprot_no :	Q92831
Mousegene_id :	18519
Mouseswissprot_no :	Q9JHD1
Immunogen :	Synthesized acetyl-peptide derived from the human PCAF around the acetylation site of K428.
Specificity :	Acetyl-PCAF (K428) Polyclonal AntibodySynthesized peptide derived from the human PCAF around the acetylation site of K428.
Formulation :	Liquid in PBS containing 50% glycerol, 0.5% BSA and 0.02% sodium azide.
Source :	Rabbit
Dilution :	Western Blot: 1/500 - 1/2000. ELISA: 1/20000. Not yet tested in other applications.
Purification :	The antibody was affinity-purified from rabbit antiserum by affinity-chromatography using epitope-specific immunogen.
Concentration :	1 mg/ml
Storage_stability :	-20°C/1 year
Msds :	MSDS_Antibody.pdf
Other_name :	KAT2B; PCAF; Histone acetyltransferase KAT2B; Histone acetyltransferase PCAF; Histone acetylase PCAF; Lysine acetyltransferase 2B; P300/CBP-associated factor; P/CAF
Molecular	93KD

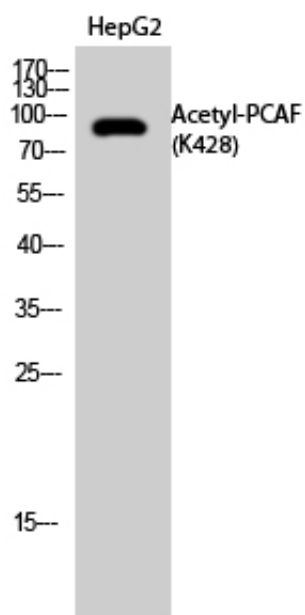


Weight :

Product Images



Western Blot analysis of HepG2 cells using Acetyl-PCAF (K428) Polyclonal Antibody.. Secondary antibody was diluted at 1:20000



Western Blot analysis of HepG2 cells using Acetyl-PCAF (K428) Polyclonal Antibody. Secondary antibody was diluted at 1:20000