

PTEN (Acetyl Lys402) Polyclonal Antibody

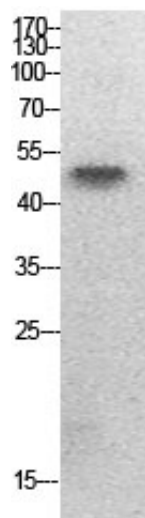
Catalog_no :	AK0053
Applications :	WB,ELISA
Reactivity :	Human,Mouse,Rat
Category :	抗原抗体
Size :	100µg/50µg/20µg
Gene_name :	PTEN
Protein_name :	Phosphatidylinositol 3,4,5-trisphosphate 3-phosphatase and dual-specificity protein phosphatase PTEN
Humangene_id :	5728
Humanswissprot_no :	P60484
Mousegene_id :	19211
Mouseswissprot_no :	O08586
Immunogen :	Synthesized acetyl-peptide derived from the human PTEN around the acetylation site of K402.
Specificity :	Acetyl-PTEN (K402) Polyclonal AntibodySynthesized peptide derived from the human PTEN around the acetylation site of K402.
Formulation :	Liquid in PBS containing 50% glycerol, 0.5% BSA and 0.02% sodium azide.
Source :	Rabbit
Dilution :	Western Blot: 1/500 - 1/2000. ELISA: 1/20000. Not yet tested in other applications.
Purification :	The antibody was affinity-purified from rabbit antiserum by affinity-chromatography using epitope-specific immunogen.
Concentration :	1 mg/ml
Storage_stability :	-20°C/1 year
Msds :	MSDS_Antibody.pdf
Other_name :	PTEN; MMAC1; TEP1; Phosphatidylinositol 3,4,5-trisphosphate 3-phosphatase and dual-specificity protein phosphatase PTEN; Mutated in multiple advanced cancers 1; Phosphatase and tensin homolog



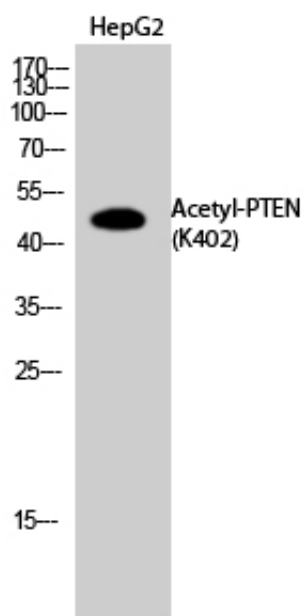
Molecular
Weight :

47KD

Product Images



Western Blot analysis of HepG2 cells using Acetyl-PTEN (K402) Polyclonal Antibody.. Secondary antibody was diluted at 1:20000



Western Blot analysis of HepG2 cells using Acetyl-PTEN (K402) Polyclonal Antibody. Secondary antibody was diluted at 1:20000