

## CRM1 (Acetyl Lys568) Polyclonal Antibody

Catalog_no :	AK0058
Applications :	WB,ELISA
Reactivity :	Human,Mouse,Rat
Category :	抗原抗体
Size :	100µg/50µg/20µg
Gene_name :	XPO1
Protein_name :	Exportin-1
Humangene_id :	<a href="#">7514</a>
Humanswissprot_no :	<a href="#">O14980</a>
Mousegene_id :	<a href="#">103573</a>
Mouseswissprot_no :	<a href="#">Q6P5F9</a>
Ratgene_id :	<a href="#">85252</a>
Ratswissprot_no :	<a href="#">Q80U96</a>
Immunogen :	Synthesized acetyl-peptide derived from the Internal region of human CRM1 around the acetylation site of K568.
Specificity :	Acetyl-CRM1 (K568) Polyclonal Antibody detects endogenous levels of CRM1 protein only when acetylation at K568.
Formulation :	Liquid in PBS containing 50% glycerol, 0.5% BSA and 0.02% sodium azide.
Source :	Rabbit
Dilution :	Western Blot: 1/500 - 1/2000. ELISA: 1/10000. Not yet tested in other applications.
Purification :	The antibody was affinity-purified from rabbit antiserum by affinity-chromatography using epitope-specific immunogen.
Concentration :	1 mg/ml
Storage_stability :	-20°C/1 year
Msds :	MSDS_Antibody.pdf

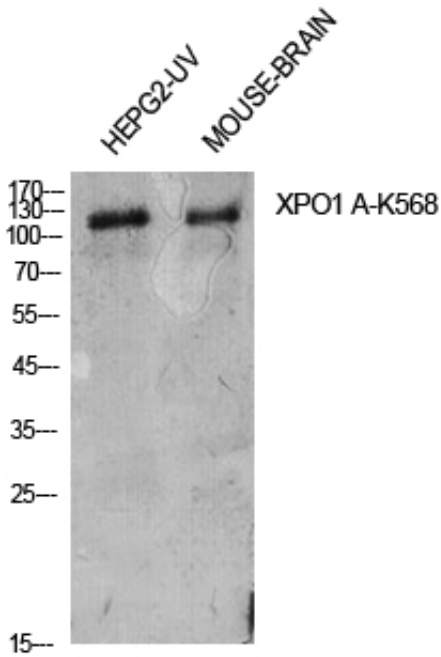


Other\_name : XPO1; CRM1; Exportin-1; Exp1; Chromosome region maintenance 1 protein homolog

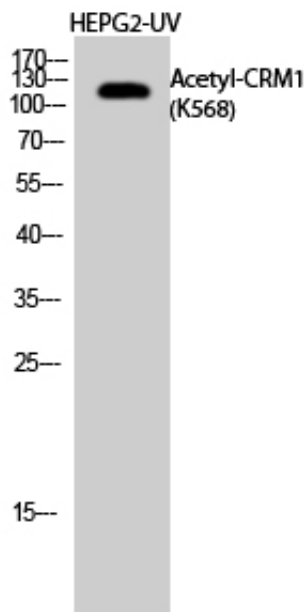
Molecular Weight : 125KD

Weight :

## Product Images



Western Blot analysis of HepG2-UV, mouse brain cells using Acetyl-CRM1 (K568) Polyclonal Antibody. Antibody was diluted at 1:500. Secondary antibody was diluted at 1:20000



Western Blot analysis of HEPG2-UV cells using Acetyl-CRM1 (K568) Polyclonal Antibody diluted at 1 : 500. Secondary antibody was diluted at 1:20000