

HMG-1 (Acetyl Lys12) Polyclonal Antibody

Catalog_no :	AK0060
Applications :	WB,IHC-p,ELISA
Reactivity :	Human,Mouse,Rat
Category :	抗原抗体
Size :	100µg/50µg/20µg
Gene_name :	HMGB1
Protein_name :	High mobility group protein B1
Humangene_id :	3146
Humanswissprot_no :	P09429
Mousegene_id :	100862258
Mouseswissprot_no :	P63158
Ratgene_id :	25459
Ratswissprot_no :	P63159
Immunogen :	Synthesized acetyl-peptide derived from the N-terminal region of human HMG-1 around the acetylation site of K12.
Specificity :	Acetyl-HMG-1 (K12) Polyclonal Antibody detects endogenous levels of HMG-1 protein only when acetylation at K12.
Formulation :	Liquid in PBS containing 50% glycerol, 0.5% BSA and 0.02% sodium azide.
Source :	Rabbit
Dilution :	Western Blot: 1/500 - 1/2000. IHC-p: 1:100-300 ELISA: 1/10000. Not yet tested in other applications.
Purification :	The antibody was affinity-purified from rabbit antiserum by affinity-chromatography using epitope-specific immunogen.
Concentration :	1 mg/ml
Storage_stability :	-20°C/1 year

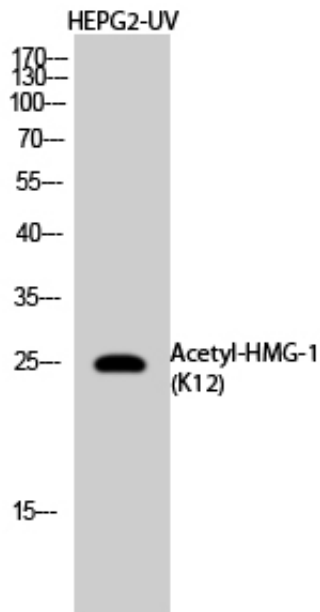


Msd : MSDS_Antibody.pdf

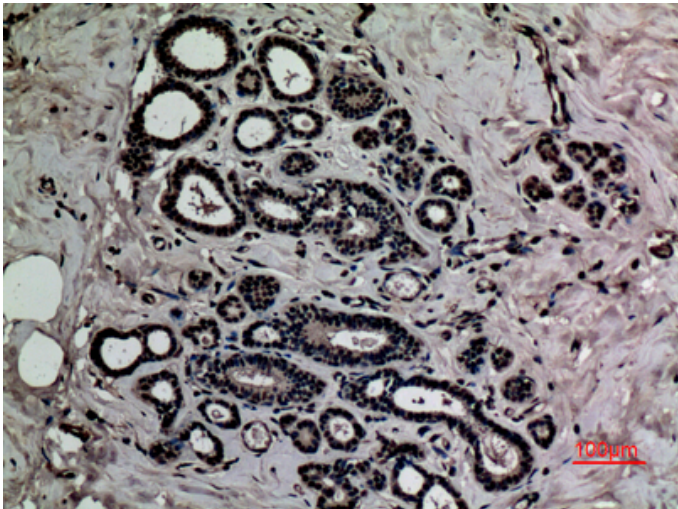
Other_name : HMGB1; HMG1; High mobility group protein B1; High mobility group protein 1; HMG-1

Molecular Weight : 25KD

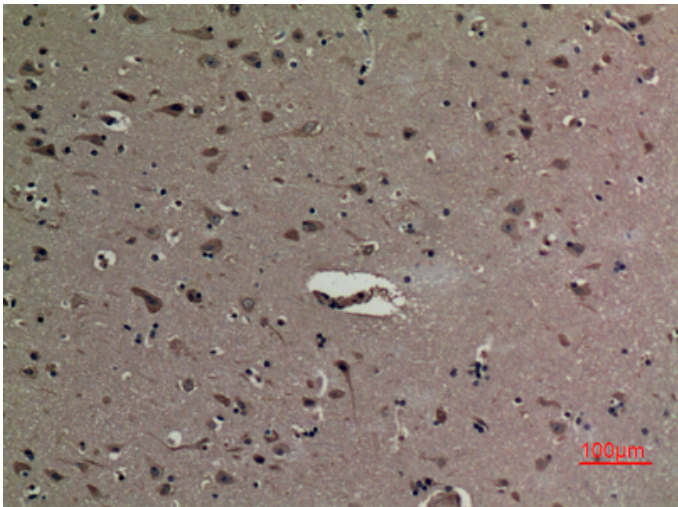
Product Images



Western Blot analysis of HepG2 cells treated with UV using Acetyl-HMG-1 (K12) Polyclonal Antibody. Antibody was diluted at 1:1000. Secondary antibody was diluted at 1:20000



Immunohistochemical analysis of paraffin-embedded human breast, antibody was diluted at 1:100



Immunohistochemical analysis of paraffin-embedded human brain, antibody was diluted at 1:100

Immunohistochemical analysis of paraffin-embedded human brain, antibody was diluted at 1:100

