

HSP70 (Acetyl Lys246) Polyclonal Antibody

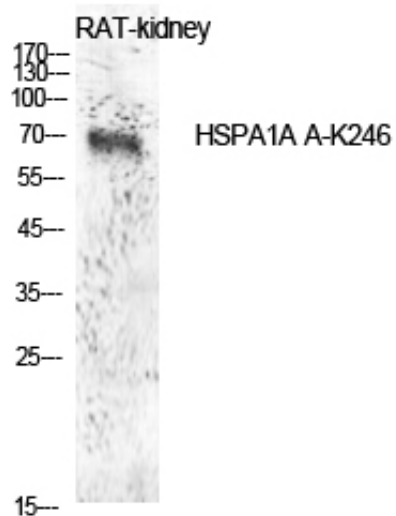
Catalog_no :	AK0061
Applications :	WB,ELISA
Reactivity :	Human
Category :	抗原抗体
Size :	100µg/50µg/20µg
Gene_name :	HSPA1A
Protein_name :	Heat shock 70 kDa protein 1A/1B
Humangene_id :	3303/3304
Humanswissprot_no :	P08107
Mousegene_id :	
Ratgene_id :	
Ratswissprot_no :	
Immunogen :	Synthesized acetyl-peptide derived from the Internal region of human HSP70 around the acetylation site of K246.
Specificity :	Acetyl-HSP70 (K246) Polyclonal Antibody detects endogenous levels of HSP70 protein only when acetylation at K246.
Formulation :	Liquid in PBS containing 50% glycerol, 0.5% BSA and 0.02% sodium azide.
Source :	Rabbit
Dilution :	Western Blot: 1/500 - 1/2000. ELISA: 1/10000. Not yet tested in other applications.
Purification :	The antibody was affinity-purified from rabbit antiserum by affinity-chromatography using epitope-specific immunogen.
Concentration :	1 mg/ml
Storage_stability :	-20°C/1 year
Msds :	MSDS_Antibody.pdf
Other_name :	HSPA1A; HSPA1; HSPA1B; Heat shock 70 kDa protein 1A/1B; Heat shock 70 kDa protein 1/2; HSP70-1/HSP70-2; HSP70.1/HSP70.2



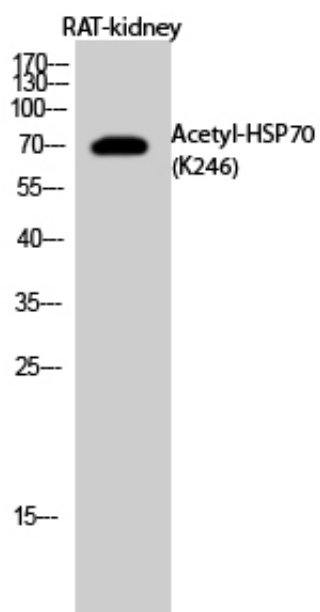
Molecular
Weight :

70KD

Product Images



Western Blot analysis of rat kidney cells using Acetyl-HSP70 (K246) Polyclonal Antibody. Antibody was diluted at 1:1000. Secondary antibody was diluted at 1:20000



Western Blot analysis of RAT-kidney cells using Acetyl-HSP70 (K246) Polyclonal Antibody diluted at 1 : 1000. Secondary antibody was diluted at 1:20000