

Nrf2 (Acetyl Lys599) Polyclonal Antibody

| | |
|-------------------|---|
| Catalog_no : | AK0063 |
| Applications : | WB,IHC-p,ELISA |
| Reactivity : | Human,Mouse,Rat |
| Category : | 抗原抗体 |
| Size : | 100µg/50µg/20µg |
| Gene_name : | NFE2L2 |
| Protein_name : | Nuclear factor erythroid 2-related factor 2 |
| Humangene_id | 4780 |
| : | |
| Humanswissprot | Q16236 |
| _no : | |
| Mousegene_id : | 18024 |
| Mouseswissprot | Q60795 |
| _no : | |
| Ratgene_id : | 83619 |
| Ratswissprot_no | O54968 |
| : | |
| Immunogen : | Synthesized acetyl-peptide derived from the C-terminal region of human Nrf2 around the acetylation site of K599. |
| Specificity : | Acetyl-Nrf2 (K599) Polyclonal Antibody detects endogenous levels of Nrf2 protein only when acetylation at K599. |
| Formulation : | Liquid in PBS containing 50% glycerol, 0.5% BSA and 0.02% sodium azide. |
| Source : | Rabbit |
| Dilution : | Western Blot: 1/500 - 1/2000. IHC-p: 1:100-300 ELISA: 1/10000. Not yet tested in other applications. |
| Purification : | The antibody was affinity-purified from rabbit antiserum by affinity-chromatography using epitope-specific immunogen. |
| Concentration : | 1 mg/ml |
| Storage_stability | -20°C/1 year |
| : | |

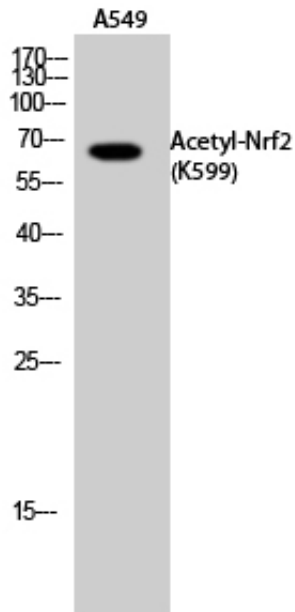


Msd : MSDS_Antibody.pdf

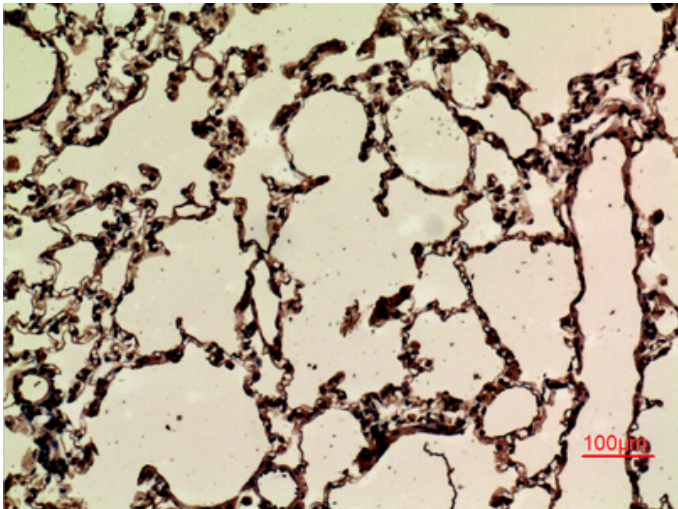
Other_name : NFE2L2; NRF2; Nuclear factor erythroid 2-related factor 2; NF-E2-related factor 2; NFE2-related factor 2; HEBP1; Nuclear factor, erythroid derived 2, like 2

Molecular Weight : 75-100KD

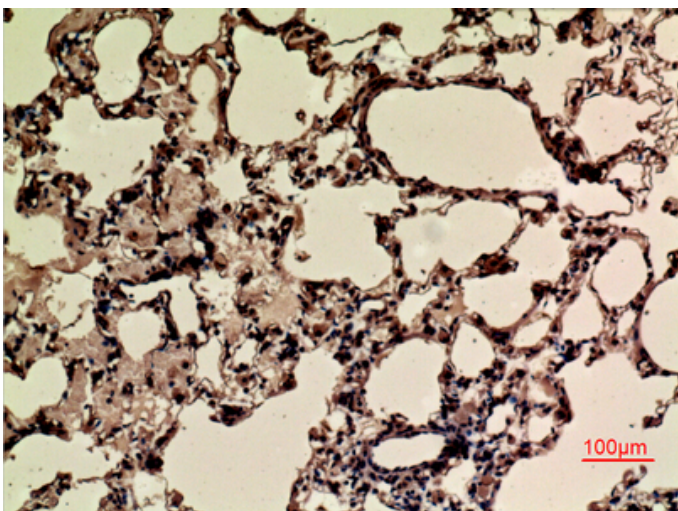
Product Images



Western Blot analysis of A549 cells using Acetyl-Nrf2 (K599) Polyclonal Antibody. Antibody was diluted at 1:1000. Secondary antibody was diluted at 1:20000

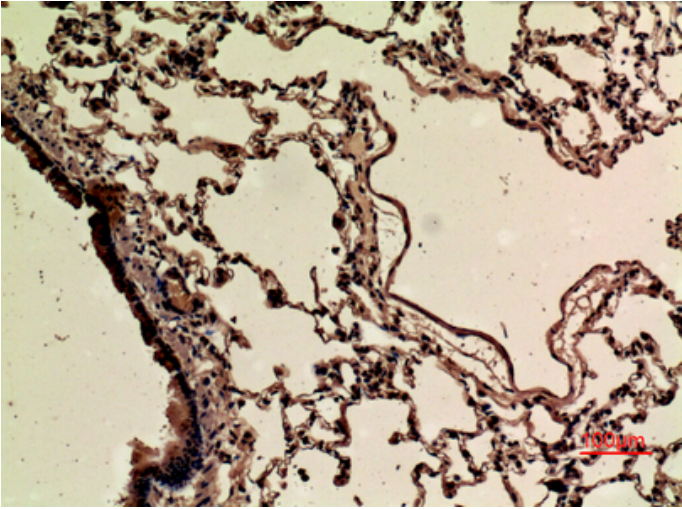


Immunohistochemical analysis of paraffin-embedded rat-lung, antibody was diluted at 1:100

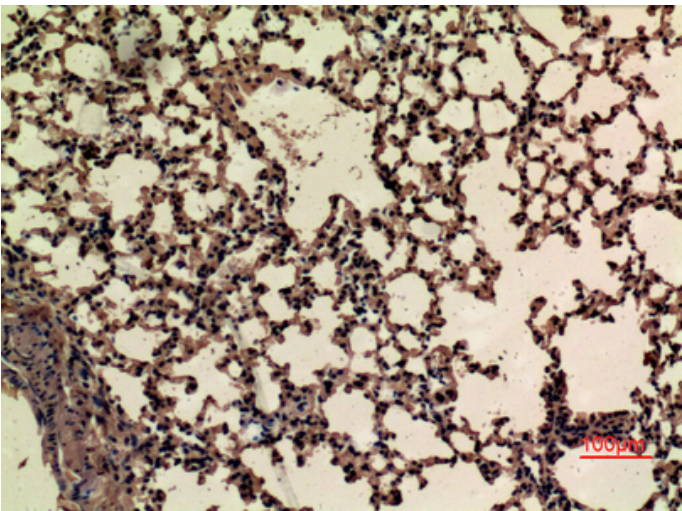


Immunohistochemical analysis of paraffin-embedded rat-lung, antibody was diluted at 1:100

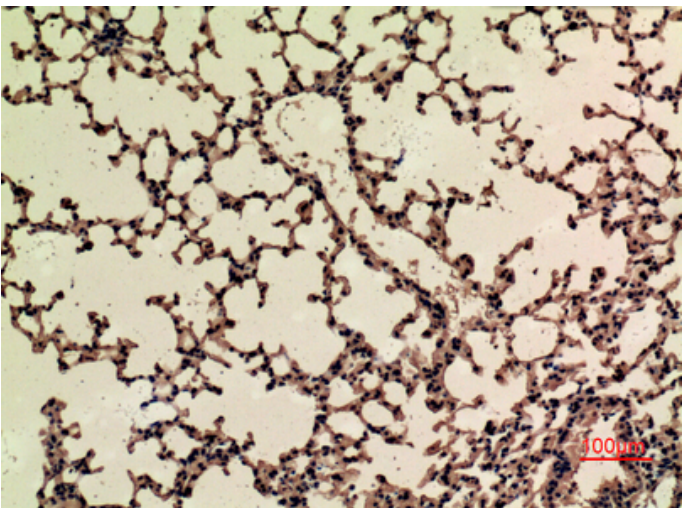
Immunohistochemical analysis of paraffin-embedded rat-lung, antibody was diluted at 1:100



Immunohistochemical analysis of paraffin-embedded mouse-lung, antibody was diluted at 1:100



Immunohistochemical analysis of paraffin-embedded mouse-lung, antibody was diluted at 1:100



Immunohistochemical analysis of paraffin-embedded mouse-lung, antibody was diluted at 1:100

