

14-3-3-pan (Acetyl Lys51/49) Polyclonal Antibody

Catalog_no :	<u>AK0066</u>
Applications :	<u>WB,ELISA</u>
Reactivity :	<u>Human,Mouse,Rat</u>
Category :	<u>抗原抗体</u>
Size :	<u>100µg/50µg/20µg</u>
Gene_name :	<u>YWHAB/YWHAG/YWHAQ/YWHAZ/SFN</u>
Protein_name :	<u>14-3-3 protein beta/alpha/14-3-3 protein gamma/14-3-3 protein theta/14-3-3 protein zeta/delta/14-3-3 protein sigma</u>
Humangene_id :	<u>7529</u>
Humanswissprot_no :	<u>P31946</u>
Mousegene_id :	<u>54401</u>
Mouseswissprot_no :	<u>Q9CQV8</u>
Ratgene_id :	<u>56011</u>
Ratswissprot_no :	<u>P35213</u>
Immunogen :	<u>Synthesized acetyl-peptide derived from human 14-3-3-pan around the acetylation site of K51.</u>
Specificity :	<u>Acetyl-14-3-3-pan (K51/49) Polyclonal Antibody detects endogenous levels of 14-3-3-pan around the acetylation site of K51 protein.</u>
Formulation :	<u>Liquid in PBS containing 50% glycerol, 0.5% BSA and 0.02% sodium azide.</u>
Source :	<u>Rabbit</u>
Dilution :	<u>Western Blot: 1/500 - 1/2000. ELISA: 1/10000. Not yet tested in other applications.</u>
Purification :	<u>The antibody was affinity-purified from rabbit antiserum by affinity-chromatography using epitope-specific immunogen.</u>
Concentration :	<u>1 mg/ml</u>
Storage_stability :	<u>-20°C/1 year</u>



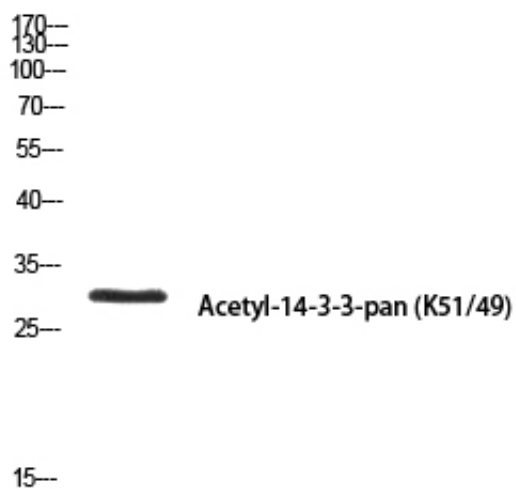
MsdS : [MSDS_Antibody.pdf](#)

Other_name : YWHAB; 14-3-3 protein beta/alpha; Protein 1054; Protein kinase C inhibitor protein 1; KCIP-1; YWHAG; 14-3-3 protein gamma; Protein kinase C inhibitor protein 1; KCIP-1; YWHAQ; 14-3-3 protein theta; 14-3-3 protein T-cell; 14-3-3 protein tau; Protein HS1; YWHAZ; 14-3-3 protein zeta/delta; Protein kinase C inhibitor protein 1; KCIP-1; SFN; HME1; 14-3-3 protein sigma; Epithelial cell marker protein 1; Stratifin

Molecular Weight : 30KD

Product Images

MOUSE-SPLEEN



Western blot analysis of MOUSE-SPLEEN using Acetyl-14-3-3-pan (K51/49) antibody. Antibody was diluted at 1:500. Secondary antibody was diluted at 1:20000