

## p300 (Acetyl Lys1542) Polyclonal Antibody

Catalog_no :	AK0067
Applications :	WB,ELISA
Reactivity :	Human,Mouse,Rat
Category :	抗原抗体
Size :	100µg/50µg/20µg
Gene_name :	EP300
Protein_name :	Histone acetyltransferase p300
Humangene_id :	<a href="#">2033</a>
Humanswissprot_no :	<a href="#">Q09472</a>
Mousegene_id :	
Mouseswissprot_no :	<a href="#">B2RWS6</a>
Ratgene_id :	
Ratswissprot_no :	
Immunogen :	Synthesized acetyl-peptide derived from human p300 around the acetylation site of K1542.
Specificity :	Acetyl-p300 (K1542) Polyclonal Antibody detects endogenous levels of p300 around the acetylation site of K1542 protein.
Formulation :	Liquid in PBS containing 50% glycerol, 0.5% BSA and 0.02% sodium azide.
Source :	Rabbit
Dilution :	Western Blot: 1/500 - 1/2000. ELISA: 1/10000. Not yet tested in other applications.
Purification :	The antibody was affinity-purified from rabbit antiserum by affinity-chromatography using epitope-specific immunogen.
Concentration :	1 mg/ml
Storage_stability :	-20°C/1 year
Msds :	MSDS_Antibody.pdf

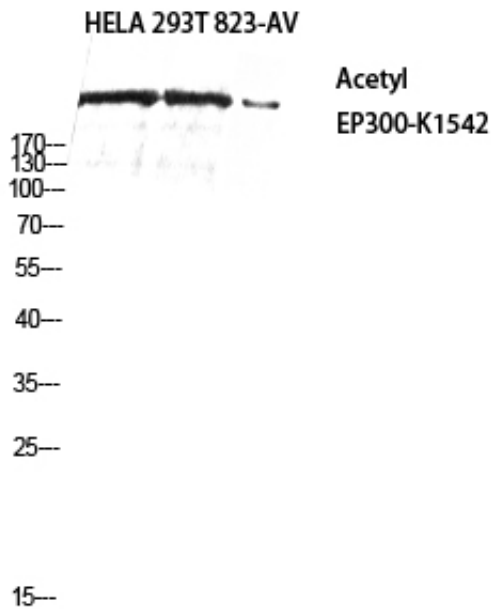


Other\_name : EP300; P300; Histone acetyltransferase p300; p300 HAT; E1A-associated protein p300

Molecular Weight : 300KD

\_\_\_\_\_

## Product Images



Western blot analysis of HELA 293T 823-AV using Acetyl-p300 (K1542) antibody. Antibody was diluted at 1:2000. Secondary antibody was diluted at 1:20000