

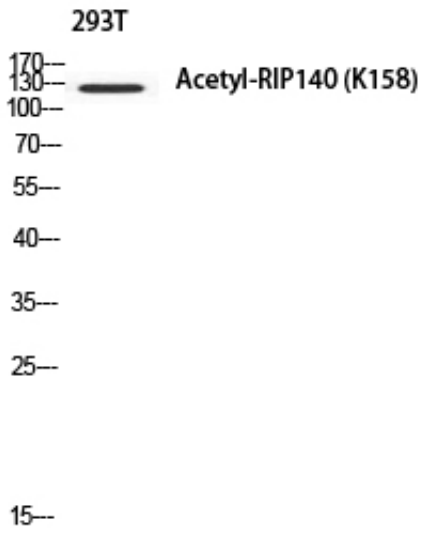
RIP140 (Acetyl Lys158) Polyclonal Antibody

| | |
|---------------------|---|
| Catalog_no : | AK0069 |
| Applications : | WB,ELISA |
| Reactivity : | Human,Mouse,Rat |
| Category : | 抗原抗体 |
| Size : | 100µg/50µg/20µg |
| Gene_name : | NRIP1 |
| Protein_name : | Nuclear receptor-interacting protein 1 |
| Humangene_id : | 8204 |
| Humanswissprot_no : | P48552 |
| Mousegene_id : | 268903 |
| Mouseswissprot_no : | Q8CBD1 |
| Ratgene_id : | |
| Ratswissprot_no : | |
| Immunogen : | Synthesized acetyl-peptide derived from human RIP140 around the acetylation site of K158. |
| Specificity : | Acetyl-RIP140 (K158) Polyclonal Antibody detects endogenous levels of RIP140 around the acetylation site of K158 protein. |
| Formulation : | Liquid in PBS containing 50% glycerol, 0.5% BSA and 0.02% sodium azide. |
| Source : | Rabbit |
| Dilution : | Western Blot: 1/500 - 1/2000. ELISA: 1/10000. Not yet tested in other applications. |
| Purification : | The antibody was affinity-purified from rabbit antiserum by affinity-chromatography using epitope-specific immunogen. |
| Concentration : | 1 mg/ml |
| Storage_stability : | -20°C/1 year |
| Msds : | MSDS_Antibody.pdf |



Other_name : NRIP1; Nuclear receptor-interacting protein 1; Nuclear factor RIP140; Receptor-interacting protein 140

Product Images



Western blot analysis of 293T using Acetyl-RIP140 (K158) antibody. Antibody was diluted at 1:500. Secondary antibody was diluted at 1:20000