

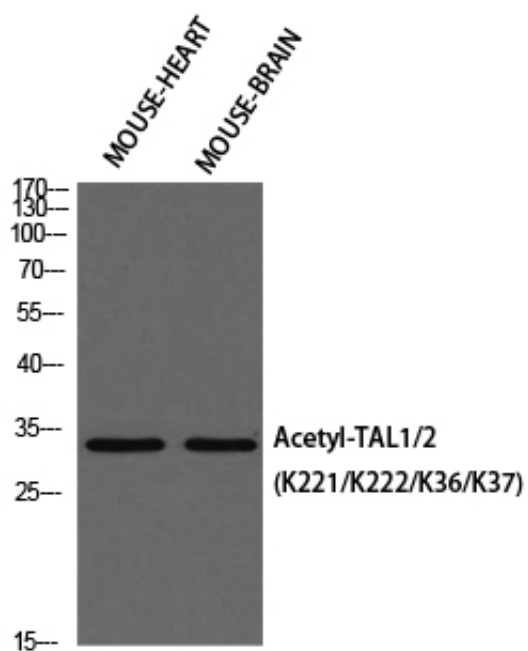
## TAL1/2 (Acetyl Lys221/Acetyl Lys222/Acetyl Lys36/Acetyl Lys37) Polyclonal Antibody

Catalog_no :	AK0071
Applications :	WB,ELISA
Reactivity :	Human,Mouse,Rat
Category :	抗原抗体
Size :	100µg/50µg/20µg
Gene_name :	TAL1/TAL2
Protein_name :	T-cell acute lymphocytic leukemia protein 1 homolog/T-cell acute lymphocytic leukemia protein 2
Humangene_id :	<a href="#">6886</a>
Humanswissprot_no :	<a href="#">P17542</a>
Mousegene_id :	<a href="#">21349</a>
Mouseswissprot_no :	<a href="#">P22091</a>
Ratgene_id :	
Ratswissprot_no :	
Immunogen :	Synthesized acetyl-peptide derived from human TAL1/2 around the acetylation site of K221.
Specificity :	Acetyl-TAL1/2 (K221/K222/K36/K37) Polyclonal Antibody detects endogenous levels of TAL1/2 around the acetylation site of K221 protein.
Formulation :	Liquid in PBS containing 50% glycerol, 0.5% BSA and 0.02% sodium azide.
Source :	Rabbit
Dilution :	Western Blot: 1/500 - 1/2000. ELISA: 1/10000. Not yet tested in other applications.
Purification :	The antibody was affinity-purified from rabbit antiserum by affinity-chromatography using epitope-specific immunogen.
Concentration :	1 mg/ml
Storage_stability :	-20°C/1 year



MsdS :	<a href="#">MSDS_Antibody.pdf</a>
Other_name :	TAL1; BHLHA17; SCL; TCL5; T-cell acute lymphocytic leukemia protein 1; TAL-1; Class A basic helix-loop-helix protein 17; bHLHa17; Stem cell protein; T-cell leukemia/lymphoma protein 5; TAL2; BHLHA19; T-cell acute lymphocytic leukemia protein 2; TAL-2; Class A basic helix-loop-helix protein 19; bHLHa19
Molecular Weight :	45KD

## Product Images



Western blot analysis of MOUSE-HEART MOUSE-BRAIN using Acetyl-TAL1/2 (K221/K222/K36/K37) antibody. Antibody was diluted at 1:500. Secondary antibody was diluted at 1:20000