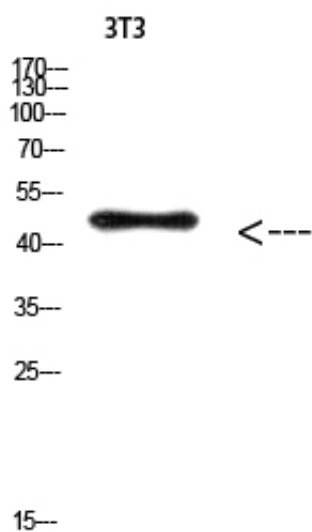




## E2F-3 (Acetyl-Lys168) Polyclonal Antibody

Catalog_no :	<u>AK0075</u>
Applications :	<u>WB,ELISA</u>
Reactivity :	<u>Human:K168,Mouse:K160,Rat:K161</u>
Category :	<u>抗原抗体</u>
Size :	<u>100µg/50µg/20µg</u>
Gene_name :	<u>E2F3 KIAA0075</u>
Protein_name :	<u>E2F transcription factor 3</u>
Humangene_id :	<u><a href="#">1871</a></u>
Humanswissprot_no :	<u><a href="#">O00716</a></u>
Immunogen :	<u>Synthesized acetyl-peptide from human protein at AA range: 130-200</u>
Specificity :	<u>The antibody detects endogenous E2F-3 (Acetyl-Lys168) protein</u>
Formulation :	<u>PBS, pH 7.4, containing 0.02% sodium azide as Preservative and 50% Glycerol.</u>
Source :	<u>Rabbit</u>
Dilution :	<u>WB: 1:500-10000 ELISA: 1:10000</u>
Purification :	<u>The antibody was affinity-purified from rabbit serum by affinity-chromatography using specific immunogen.</u>
Concentration :	<u>1 mg/ml</u>
Storage_stability :	<u>-20°C/1 year</u>
Msds :	<u>MSDS_Antibody.pdf</u>
Other_name :	<u>E2F3 KIAA0075</u>
Molecular Weight :	<u>50KD</u>

## Product Images



Western Blot analysis of 3T3 cells using Antibody diluted at 500. Secondary antibody was diluted at 1:20000