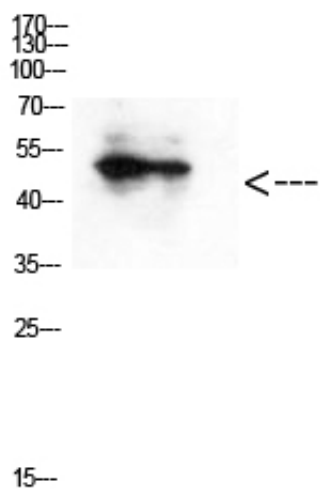


GATA-2/3 (Acetyl-Lys336/304) Polyclonal Antibody

Catalog_no :	AK0076
Applications :	WB,ELISA
Reactivity :	Human:K336/304,Mouse:K336/304,Rat:K336/305
Category :	抗原抗体
Size :	100µg/50µg/20µg
Gene_name :	GATA2/GATA3
Protein_name :	GATA binding protein 2/GATA binding protein 3
Humangene_id :	2624
Humanswissprot_no :	P23769/P23771
Immunogen :	Synthesized acetyl-peptide from human protein at AA range: 320-390
Specificity :	The antibody detects endogenous GATA-2/3 (Acetyl-Lys336/304) protein
Formulation :	PBS, pH 7.4, containing 0.02% sodium azide as Preservative and 50% Glycerol.
Source :	Rabbit
Dilution :	WB: 1:500-10000 ELISA: 1:10000
Purification :	The antibody was affinity-purified from rabbit serum by affinity-chromatography using specific immunogen.
Concentration :	1 mg/ml
Storage_stability :	-20°C/1 year
Msds :	MSDS_Antibody.pdf
Other_name :	GATA2
Molecular Weight :	50KD

Product Images



Western Blot analysis of hepg2 cells using Antibody diluted at 500. Secondary antibody was diluted at 1:20000