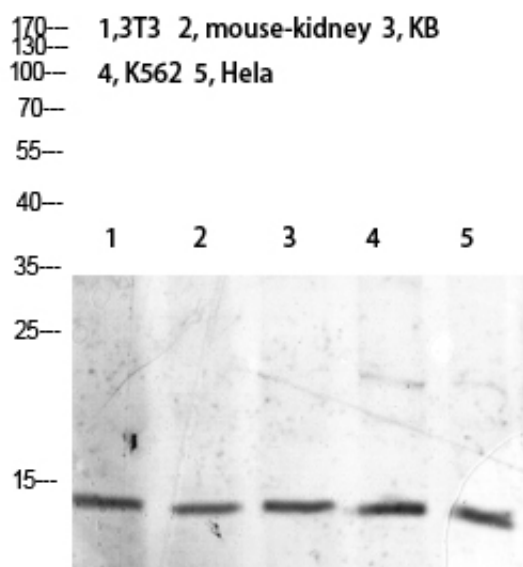




Histone H2B (Acetyl Lys21) Polyclonal Antibody

Catalog_no :	AK0079
Applications :	WB,ELISA
Reactivity :	Human,Rat,Mouse
Category :	抗原抗体
Size :	100µg/50µg/20µg
Gene_name :	Histone H2B
Protein_name :	Histone H2B
Humangene_id :	255626
Humanswissprot_no :	Q96A08/P33778/P62807
Immunogen :	Synthetic Acetyl peptide from human protein at AA range: 21
Specificity :	The antibody detects endogenous Histone H2B when Acetyl occurs at Lys21
Formulation :	Liquid in PBS containing 50% glycerol, 0.5% BSA and 0.02% sodium azide.
Source :	Rabbit
Dilution :	WB 1:500-2000, ELISA 1:10000-20000
Purification :	The antibody was affinity-purified from rabbit antiserum by affinity-chromatography using epitope-specific immunogen.
Concentration :	1 mg/ml
Storage_stability :	-20°C/1 year
Msds :	MSDS_Antibody.pdf
Molecular Weight :	15KD

Product Images



Western blot analysis of 3T3 mouse-kidney KB K562 Hela lysate, antibody was diluted at 2000. Secondary antibody was diluted at 1:20000