

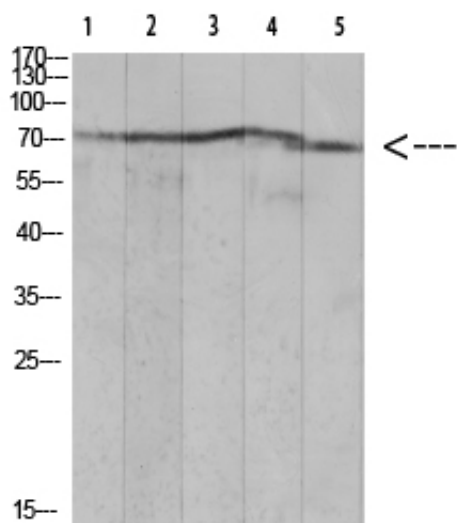
Ku-70 (Acetyl Lys317) Polyclonal Antibody

Catalog_no :	AK0083
Applications :	WB,ELISA
Reactivity :	Human,Rat,Mouse
Category :	抗原抗体
Size :	100µg/50µg/20µg
Gene_name :	XRCC6 G22P1
Protein_name :	X-ray repair cross-complementing protein 6 (EC 3.6.4.-) (EC 4.2.99.-) (5'-deoxyribose-5-phosphate lyase Ku70) (5'-dRP lyase Ku70) (70 kDa subunit of Ku antigen) (ATP-dependent DNA helicase 2 subunit 1) (ATP-dependent DNA helicase II 70 kDa subunit) (
Humangene_id :	2547
Humanswissprot_no :	P12956
Immunogen :	Synthetic Acetyl peptide from human protein at AA range: 317
Specificity :	The antibody detects endogenous Ku-70 when Acetyl occurs at Lys317
Formulation :	Liquid in PBS containing 50% glycerol, 0.5% BSA and 0.02% sodium azide.
Source :	Rabbit
Dilution :	WB 1:500-2000, ELISA 1:10000-20000
Purification :	The antibody was affinity-purified from rabbit antiserum by affinity-chromatography using epitope-specific immunogen.
Concentration :	1 mg/ml
Storage_stability :	-20°C/1 year
Msds :	MSDS_Antibody.pdf
Other_name :	X-ray repair cross-complementing protein 6 (EC 3.6.4.-) (EC 4.2.99.-) (5'-deoxyribose-5-phosphate lyase Ku70) (5'-dRP lyase Ku70) (70 kDa subunit of Ku antigen) (ATP-dependent DNA helicase 2 subunit 1) (ATP-dependent DNA helicase II 70 kDa subunit) (CTC box-binding factor 75 kDa subunit) (CTC75) (CTCBF) (DNA repair protein XRCC6) (Lupus Ku autoantigen protein p70) (Ku70) (Thyroid-lupus autoantigen) (TLAA) (X-ray repair complementing defective repair in Chinese hamster cells 6)
Molecular	69KD



Weight :

Product Images



1 mouse-lung 2 mouse-brain
3 mouse-heart 4 Hela 5 mouse-liver

Western blot analysis of mouse-lung lysate, antibody was diluted at 1000. Secondary antibody was diluted at 1:20000