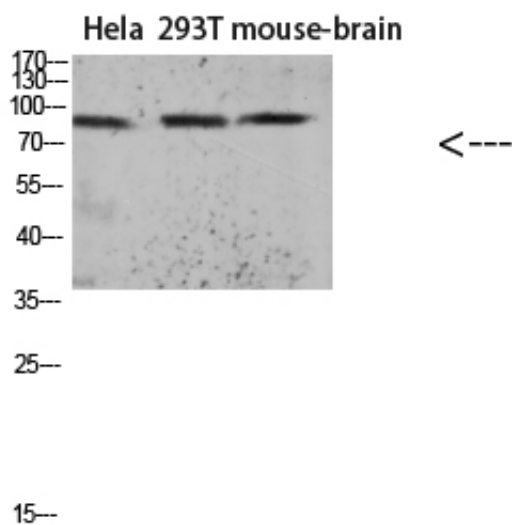




## Tau (Acetyl Lys174) Polyclonal Antibody

Catalog_no :	AK0084
Applications :	WB,ELISA
Reactivity :	Human,Rat,Mouse
Category :	抗原抗体
Size :	100µg/50µg/20µg
Gene_name :	MAPT MAPTL MTBT1 TAU
Protein_name :	Microtubule-associated protein tau (Neurofibrillary tangle protein) (Paired helical filament-tau) (PHF-tau)
Humangene_id :	<a href="#">4137</a>
Humanswissprot_no :	<a href="#">P10636</a>
Immunogen :	Synthetic Acetyl peptide from human protein at AA range: 174
Specificity :	The antibody detects endogenous Tau when Acetyl occurs at Lys174
Formulation :	Liquid in PBS containing 50% glycerol, 0.5% BSA and 0.02% sodium azide.
Source :	Rabbit
Dilution :	WB 1:500-2000, ELISA 1:10000-20000
Purification :	The antibody was affinity-purified from rabbit antiserum by affinity-chromatography using epitope-specific immunogen.
Concentration :	1 mg/ml
Storage_stability :	-20°C/1 year
Msds :	<a href="#">MSDS_Antibody.pdf</a>
Other_name :	Microtubule-associated protein tau (Neurofibrillary tangle protein) (Paired helical filament-tau) (PHF-tau)
Molecular Weight :	80KD

## Product Images



Western blot analysis of KB Hela lysate, antibody was diluted at 1000. Secondary antibody was diluted at 1:20000