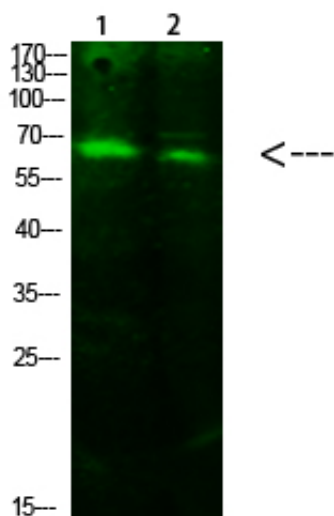


ACSS1 (Acetyl-K642) Polyclonal Antibody

Catalog_no :	AK0085
Applications :	WB,ELISA
Reactivity :	Human:K642,Mouse:K635,Rat:K635
Category :	抗原抗体
Size :	100µg/50µg/20µg
Gene_name :	ACSS1 ACAS2L KIAA1846
Protein_name :	ACSS1
Humangene_id :	84532
Humanswissprot_no :	Q9NUB1
Immunogen :	Synthesized Acetyl peptide derived from human ACSS1. at AA range: K642
Specificity :	This antibody detects endogenous levels of ACSS1 (Acetyl-K642), It doesn't react with total protein.
Formulation :	Liquid in PBS containing 50% glycerol, 0.5% BSA and 0.02% sodium azide.
Source :	Rabbit
Dilution :	Western Blot: 1/500 - 1/2000. ELISA: 1/20000. Not yet tested in other applications.
Purification :	The antibody was affinity-purified from rabbit antiserum by affinity-chromatography using epitope-specific immunogen.
Concentration :	1 mg/ml
Storage_stability :	-20°C/1 year
Msds :	MSDS_Antibody.pdf
Other_name :	Acetyl-coenzyme A synthetase 2-like, mitochondrial (EC 6.2.1.1) (Acetate--CoA ligase 2) (Acetyl-CoA synthetase 2) (AceCS2) (Acyl-CoA synthetase short-chain family member 1)

Product Images



Western Blot analysis of 1,293T 2, hela cells using primary antibody diluted at 1:1000(4°C overnight).
Secondary antibody : Goat Anti-rabbit IgG IRDye 800(diluted at 1:5000, 25°C, 1 hour)