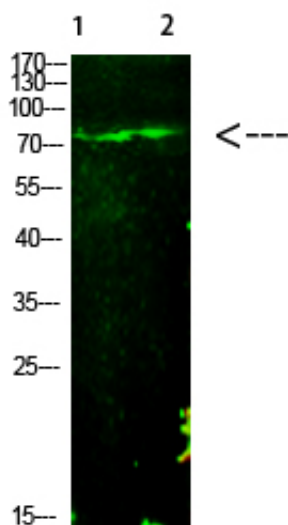


E2F-1 (Acetyl-K125) Polyclonal Antibody

Catalog_no :	AK0088
Applications :	WB,ELISA
Reactivity :	Human:K125,Mouse:K120,Rat:K123
Category :	抗原抗体
Size :	100µg/50µg/20µg
Gene_name :	E2F1 RBBP3
Protein_name :	E2F-1
Humangene_id :	1869
Humanswissprot_no :	Q01094
Immunogen :	Synthesized Acetyl peptide derived from human E2F-1. at AA range: K125
Specificity :	This antibody detects endogenous levels of E2F-1 (Acetyl-K125), It doesn't react with total protein.
Formulation :	Liquid in PBS containing 50% glycerol, 0.5% BSA and 0.02% sodium azide.
Source :	Rabbit
Dilution :	Western Blot: 1/500 - 1/2000. ELISA: 1/20000. Not yet tested in other applications.
Purification :	The antibody was affinity-purified from rabbit antiserum by affinity-chromatography using epitope-specific immunogen.
Concentration :	1 mg/ml
Storage_stability :	-20°C/1 year
Msds :	MSDS_Antibody.pdf
Other_name :	Transcription factor E2F1 (E2F-1) (PBR3) (Retinoblastoma-associated protein 1) (RBAP-1) (Retinoblastoma-binding protein 3) (RBBP-3) (pRB-binding protein E2F-1)
Molecular Weight :	70KD

Product Images



Western Blot analysis of 1,mouse-liver 2,hela cells using primary antibody diluted at 1:1000(4°C overnight).
Secondary antibody : Goat Anti-rabbit IgG IRDye 800(diluted at 1:5000, 25°C, 1 hour)