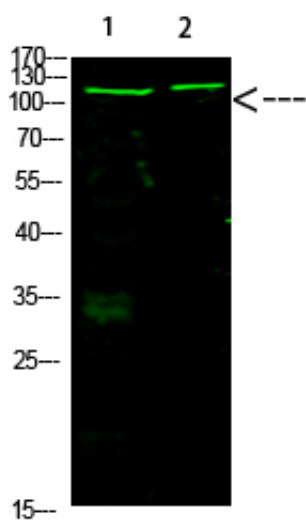


Rb (Acetyl-K873/K874) Polyclonal Antibody

Catalog_no :	<u>AK0092</u>
Applications :	<u>WB,ELISA</u>
Reactivity :	<u>Human:K873+K874,Mouse:K866+K867,Rat:K865+K866</u>
Category :	<u>抗原抗体</u>
Size :	<u>100µg/50µg/20µg</u>
Gene_name :	<u>RB1</u>
Protein_name :	<u>Rb</u>
Humangene_id :	<u>5925</u>
Humanswissprot_no :	<u>P06400</u>
Immunogen :	<u>Synthesized Acetyl peptide derived from human Rb. at AA range: K873/872</u>
Specificity :	<u>This antibody detects endogenous levels of Rb (Acetyl-K873/K874), It doesn't react with total protein.</u>
Formulation :	<u>Liquid in PBS containing 50% glycerol, 0.5% BSA and 0.02% sodium azide.</u>
Source :	<u>Rabbit</u>
Dilution :	<u>wb dilution 1:1000</u>
Purification :	<u>The antibody was affinity-purified from rabbit antiserum by affinity-chromatography using epitope-specific immunogen.</u>
Concentration :	<u>1 mg/ml</u>
Storage_stability :	<u>-20°C/1 year</u>
Msds :	<u>MSDS_Antibody.pdf</u>
Other_name :	<u>Retinoblastoma-associated protein (p105-Rb) (pRb) (Rb) (pp110)</u>

Product Images



Western Blot analysis of 1,mouse-heart 3,mouse-brain cells using primary antibody diluted at 1:1000(4°C overnight). Secondary antibody : Goat Anti-rabbit IgG IRDye 800(diluted at 1:5000, 25°C, 1 hour)