



Bcl-2 Monoclonal Antibody(6B5)

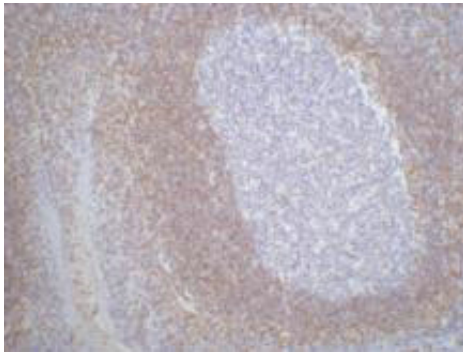
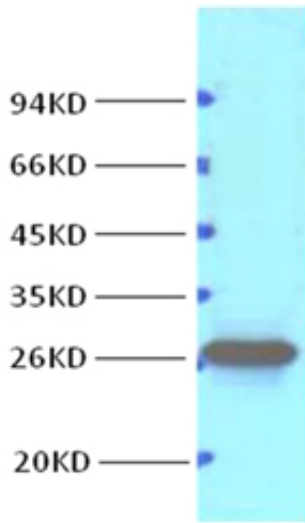
Catalog_no :	AM3041
Applications :	IF,WB,IHC-p
Reactivity :	Human,Mouse,Rat,chicken
Category :	抗原抗体
Size :	100µg/50µg
Gene_name :	BCL2
Protein_name :	Apoptosis regulator Bcl-2
Humangene_id	596
:	
Humanswissprot	P10415
_no :	
Mousegene_id :	12043
Mouseswissprot	P10417
_no :	
Ratgene_id :	24224
Ratswissprot_no	P49950
:	
Immunogen :	Synthetic Peptide of Bcl-2
Specificity :	The antibody detects endogenous Bcl-2 proteins.
Formulation :	PBS, pH 7.4, containing 0.02% sodium azide as Preservative and 50% Glycerol.
Source :	Mouse
Dilution :	IF: 1:50-200 WB: 1:1000~2000 IHC: 1:200
Purification :	The antibody was affinity-purified from mouse ascites by affinity-chromatography using specific immunogen.
Storage_stability	-20°C/1 year
:	
Msds :	MSDS_Antibody.pdf
Other_name :	BCL2; Apoptosis regulator Bcl-2
Molecular	26KD



Weight :

Product Images

Western blot analysis of Hela, diluted at 1:1000



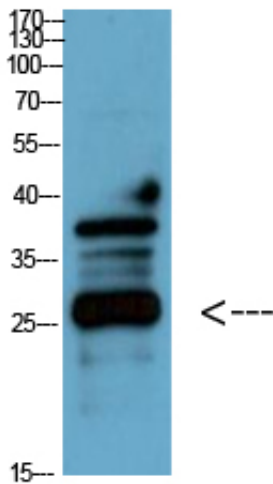
IHC staining of Human tonsil tissue paraffin-embedded, diluted at 1:200.

The picture was kindly provided by our customer

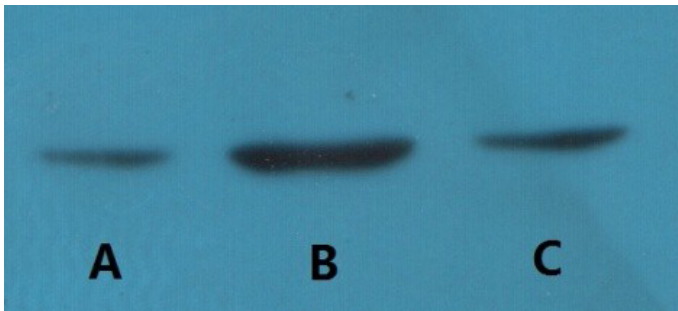


Bcl-2

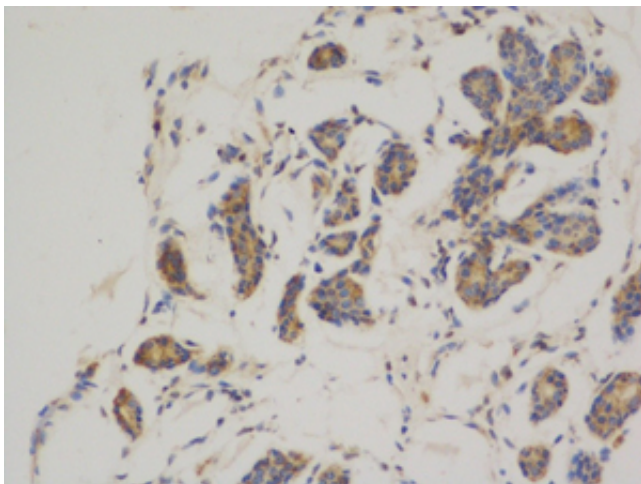
Western Blot analysis of chicken cell lysis using Antibody diluted at 1:1000



chicken cell lysis

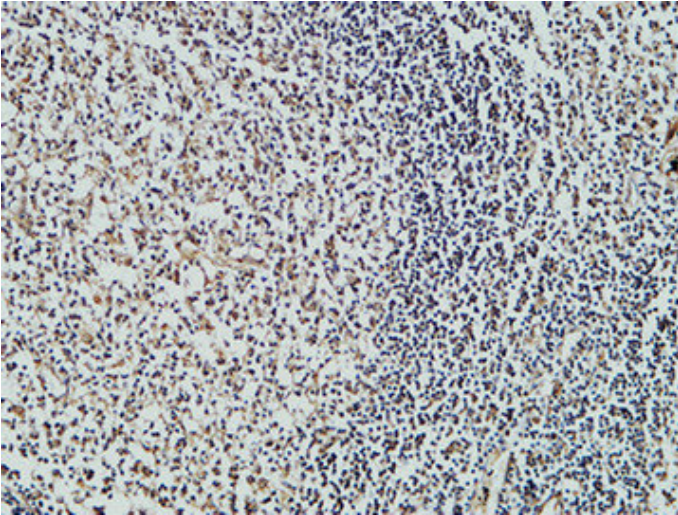


Western blot detection of Bcl-2 in human breast cancer cell line MCF-7(A), MDA-MB-231(B) and Cal51(C) using Bcl-2 mouse mAb (1:2000 diluted). Predicted band size: 26kDa. Observed band size: 26kDa. Picture was kindly provided by our customer from Tianjin Medical University Cancer Institute and Hospital

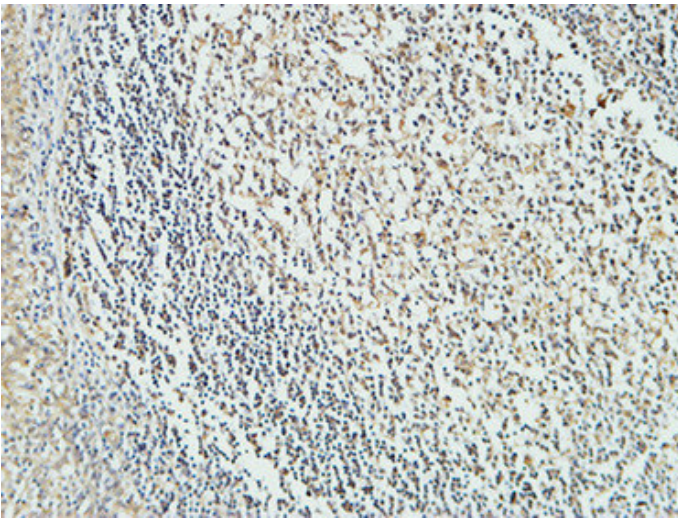


Immunohistochemical analysis of paraffin-embedded Human breast cancer. 1, Using Bcl-2 Mouse mAb diluted at 1:200 (4°, overnight). 2, High-pressure and temperature Citric acid, pH6.0 was used for antigen retrieval. 3, Secondary antibody was diluted at 1:200 (room temperature, 50min). Picture was kindly provided by our customer from Tianjin Medical University Cancer Institute and Hospital

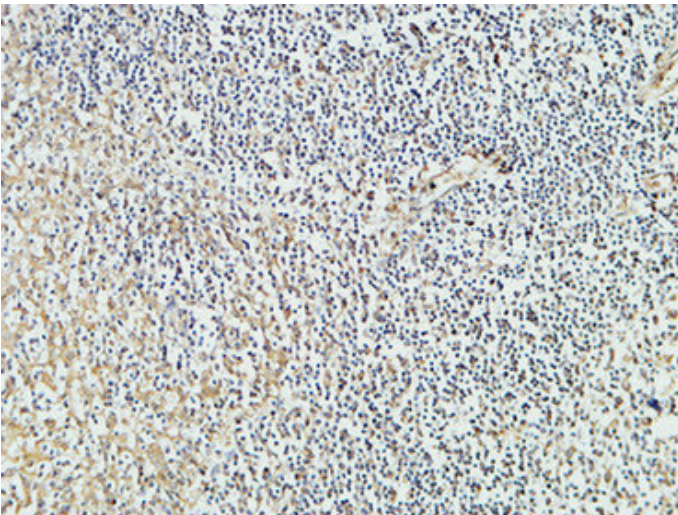
Immunohistochemical analysis of paraffin-embedded Human Lymph gland. 1, Antibody was diluted at 1:100 (4°, overnight). 2, High-pressure and temperature EDTA, pH8.0 was used for antigen retrieval. 3, Secondary antibody was diluted at 1:200 (room temperature, 30min).



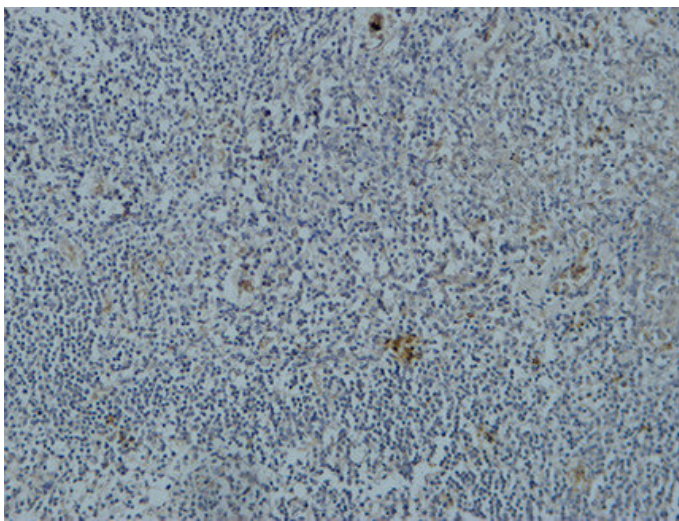
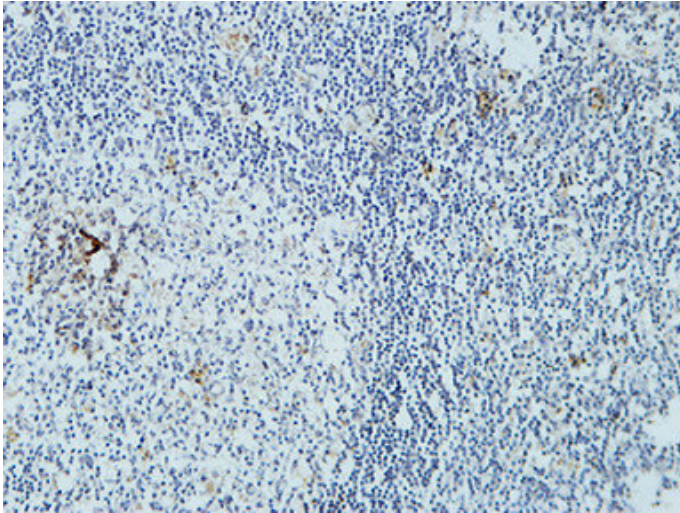
Immunohistochemical analysis of paraffin-embedded Human Lymph gland. 1, Antibody was diluted at 1:100(4°,overnight). 2, High-pressure and temperature EDTA, pH8.0 was used for antigen retrieval. 3,Secondary antibody was diluted at 1:200(room temperature, 30min).



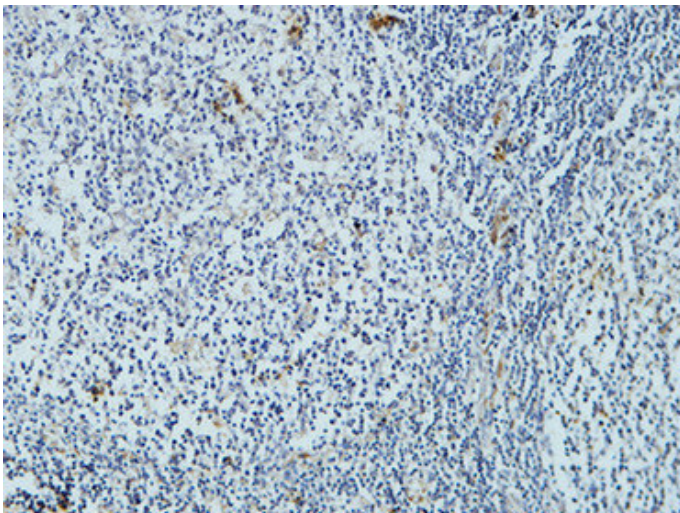
Immunohistochemical analysis of paraffin-embedded Human Lymph gland. 1, Antibody was diluted at 1:100(4°,overnight). 2, High-pressure and temperature EDTA, pH8.0 was used for antigen retrieval. 3,Secondary antibody was diluted at 1:200(room temperature, 30min).



Immunohistochemical analysis of paraffin-embedded Human Lymph gland. 1, Antibody was diluted at 1:200(4°,overnight). 2, High-pressure and temperature EDTA, pH8.0 was used for antigen retrieval. 3,Secondary antibody was diluted at 1:200(room temperature, 30min).

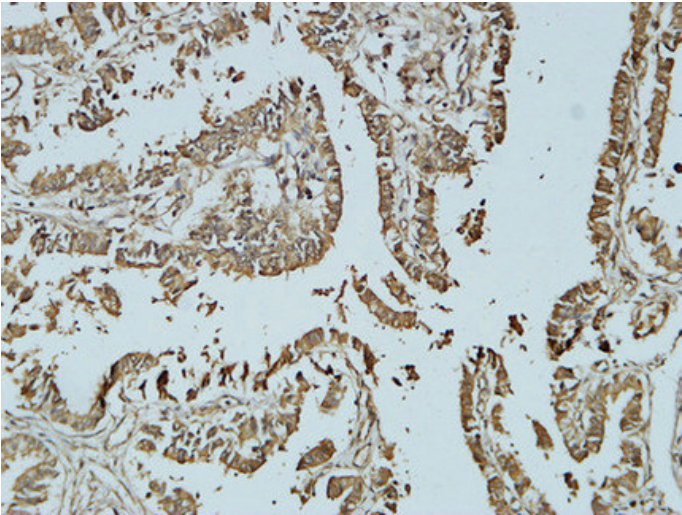
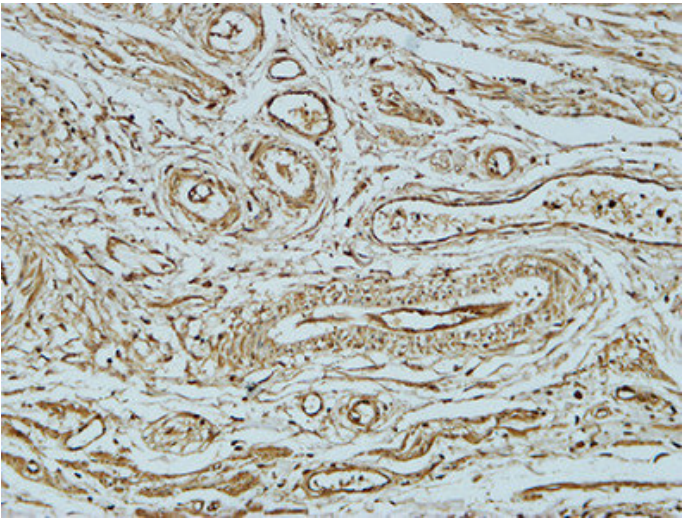
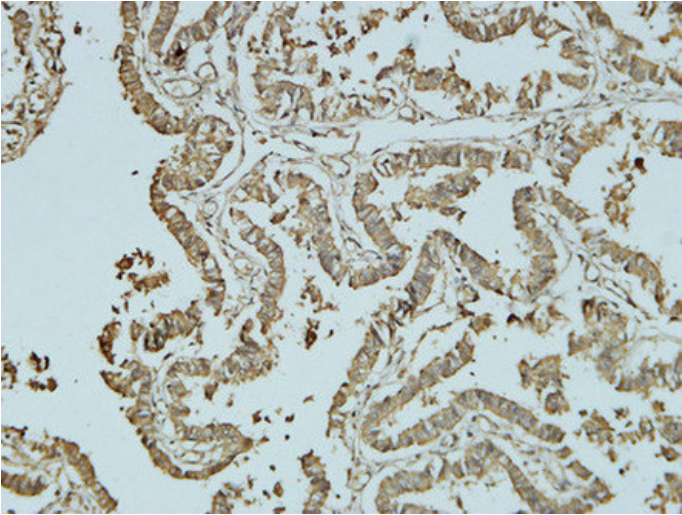


Immunohistochemical analysis of paraffin-embedded Human Lymph gland. 1, Antibody was diluted at 1:200(4°,overnight). 2, High-pressure and temperature EDTA, pH8.0 was used for antigen retrieval. 3,Secondary antibody was diluted at 1:200(room temperature, 30min).



Immunohistochemical analysis of paraffin-embedded Human Fallopian tube. 1, Antibody was diluted at 1:200(4°,overnight). 2, High-pressure and temperature EDTA, pH8.0 was used for antigen retrieval. 3,Secondary antibody was diluted at 1:200(room temperature, 30min).

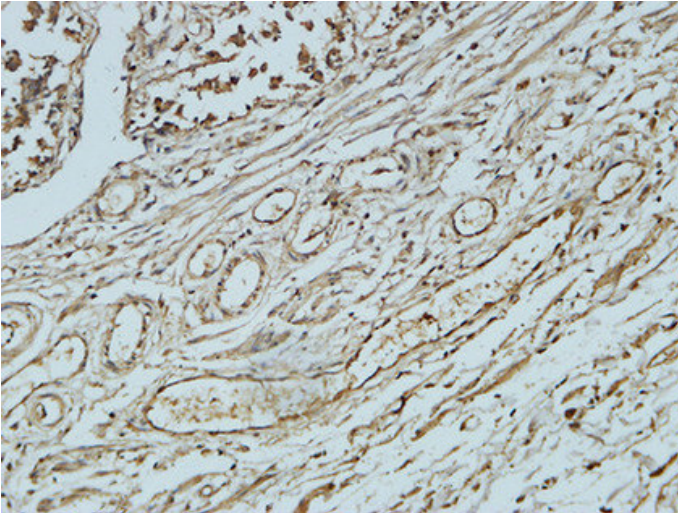
Immunohistochemical analysis of paraffin-embedded Human Fallopian tube. 1, Antibody was diluted at 1:100(4°,overnight). 2, High-pressure and temperature EDTA, pH8.0 was used for antigen retrieval. 3,Secondary antibody was diluted at 1:200(room temperature, 30min).



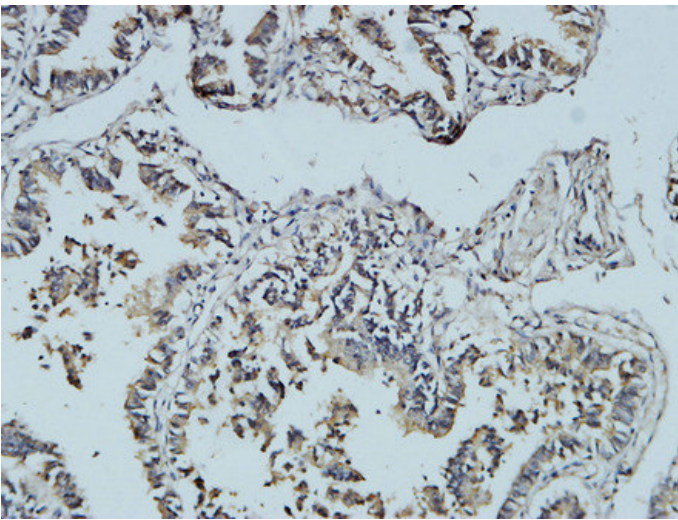
Immunohistochemical analysis of paraffin-embedded Human Fallopian tube. 1, Antibody was diluted at 1:100(4°,overnight). 2, High-pressure and temperature EDTA, pH8.0 was used for antigen retrieval. 3,Secondary antibody was diluted at 1:200(room temperature, 30min).

Immunohistochemical analysis of paraffin-embedded Human Fallopian tube. 1, Antibody was diluted at 1:100(4°,overnight). 2, High-pressure and temperature EDTA, pH8.0 was used for antigen retrieval. 3,Secondary antibody was diluted at 1:200(room temperature, 30min).

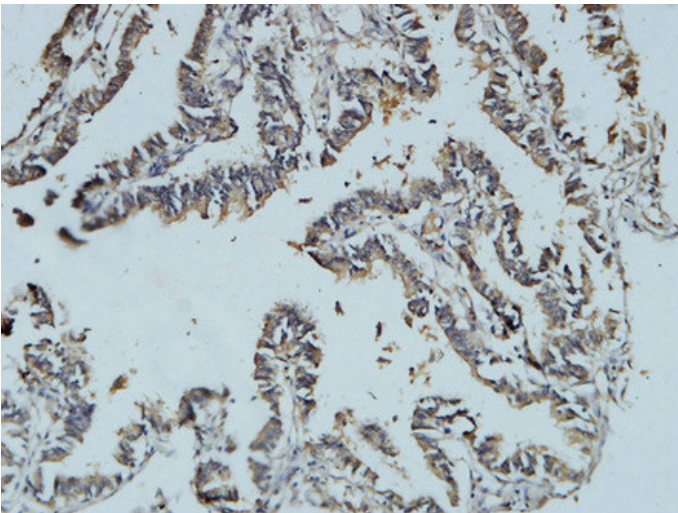
Immunohistochemical analysis of paraffin-embedded Human Fallopian tube. 1, Antibody was diluted at 1:200(4°,overnight). 2, High-pressure and temperature EDTA, pH8.0 was used for antigen retrieval. 3,Secondary antibody was diluted at 1:200(room temperature, 30min).



Immunohistochemical analysis of paraffin-embedded Human Fallopian tube. 1, Antibody was diluted at 1:400(4°,overnight). 2, High-pressure and temperature EDTA, pH8.0 was used for antigen retrieval. 3,Secondary antibody was diluted at 1:200(room temperature, 30min).



Immunohistochemical analysis of paraffin-embedded Human Fallopian tube. 1, Antibody was diluted at 1:400(4°,overnight). 2, High-pressure and temperature EDTA, pH8.0 was used for antigen retrieval. 3,Secondary antibody was diluted at 1:200(room temperature, 30min).



Immunohistochemical analysis of paraffin-embedded Human Fallopian tube. 1, Antibody was diluted at 1:400(4°,overnight). 2, High-pressure and temperature EDTA, pH8.0 was used for antigen retrieval. 3,Secondary antibody was diluted at 1:200(room temperature, 30min).

