



## EGFR Monoclonal Antibody(1B10)

Catalog_no :	AM3044
Applications :	WB,IF
Reactivity :	Human
Category :	抗原抗体
Size :	100µg/50µg
Gene_name :	EGFR
Protein_name :	Epidermal growth factor receptor
Humangene_id :	<a href="#">1956</a>
Humanswissprot_no :	<a href="#">P00533</a>
Mousegene_id :	<a href="#">13649</a>
Mouseswissprot_no :	<a href="#">Q01279</a>
Ratswissprot_no :	
Immunogen :	Synthetic Peptide of EGFR
Specificity :	The antibody detects endogenous EGFR proteins.
Formulation :	PBS, pH 7.4, containing 0.02% sodium azide as Preservative and 50% Glycerol.
Source :	Mouse
Dilution :	WB: 1:1000 IF: 1:100-200
Purification :	The antibody was affinity-purified from mouse ascites by affinity-chromatography using specific immunogen.
Storage_stability :	-20°C/1 year
Msds :	<a href="#">MSDS_Antibody.pdf</a>
Other_name :	EGFR; ERBB; ERBB1; HER1; Epidermal growth factor receptor; Proto-oncogene c-ErbB-1; Receptor tyrosine-protein kinase erbB-1
Molecular Weight :	170KD



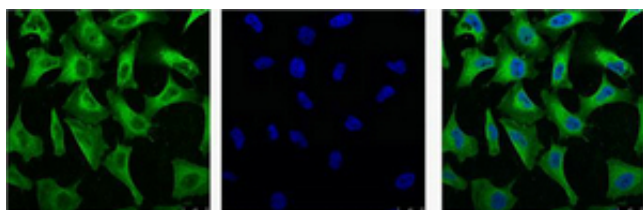
**专注二抗产品**

Biodragon旗下品牌

---

## Product Images

Western blot analysis of Hela, diluted at 1:1000.



IF analysis of Hela with antibody (Left) and DAPI (Right) diluted at 1:100.