



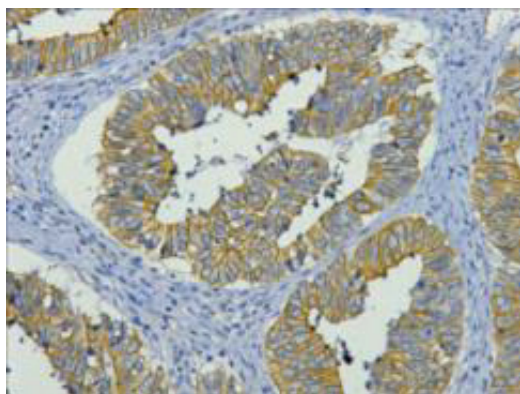
CK19 Monoclonal Antibody(11F5)

Catalog_no :	AM3051
Applications :	IHC-p
Reactivity :	Human,Mouse,Rat
Category :	抗原抗体
Size :	100µg/50µg
Gene_name :	KRT19
Protein_name :	Keratin type I cytoskeletal 19
Humangene_id :	3880
Humanswissprot_no :	P08727
Mousegene_id :	16669
Mouseswissprot_no :	P19001
Ratgene_id :	360626
Ratswissprot_no :	Q63279
Immunogen :	Synthetic Peptide of CK19
Specificity :	The antibody detects endogenous CK19 proteins.
Formulation :	PBS, pH 7.4, containing 0.02% sodium azide as Preservative and 50% Glycerol.
Source :	Mouse
Dilution :	IHC: 1:200
Purification :	The antibody was affinity-purified from mouse ascites by affinity-chromatography using specific immunogen.
Storage_stability :	-20°C/1 year
Msds :	MSDS_Antibody.pdf
Other_name :	KRT19; Keratin, type I cytoskeletal 19; Cytokeratin-19; CK-19; Keratin-19; K19
Molecular	44KD



Weight :

Product Images



IHC staining of human colon cancer tissue, diluted at 1:200.